



**www.motographix.co.uk**  
**Yamaha FS1 & DX**

**motographix.co.uk**



## **Factory Parts Manual**

**Yamaha FS1 & DX**

**Supplied by [www.motographix.co.uk](http://www.motographix.co.uk)**

**if you have been supplied this by anybody else  
please e-mail [david@motographix.co.uk](mailto:david@motographix.co.uk)**

[motographix.co.uk]



# YAMAHA

## PARTS LIST

MODEL **FS1** (77)

(TYPE 2GO)

MODEL **FS1-DX** (77)

(TYPE 2GO)

WITHOUT PEDAL  
FOR ENGLAND

**YAMAHA MOTOR CO., LTD.**

COPY RIGHT: ALL RIGHTS RESERVED

NO PART OF THIS PUBLICATION MAY BE REPRODUCED WITHOUT PERMISSION.

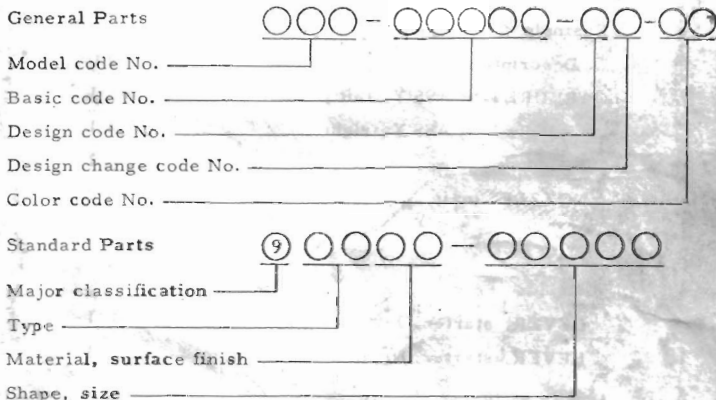
[www.motographix.co.uk](http://www.motographix.co.uk)

# FOREWORD

This Parts List relates to the parts in use for the YAMAHA FS1/FS1-DX. When you are ordering replacement parts for the YAMAHA FS1/FS1-DX, refer to this Parts List and quote both part numbers and part names correctly.

## 1. Structure of Part No.

Yamaha parts are divided largely into two categories; general parts and standard parts, and each part No. has the following structure:



Note: Every standard No. begins with 9.

## 2. How to Use this Parts List

- (1) Except for steel balls (whose size is indicated in inches), the size of all parts is indicated in millimeters in the following manner.

Hose (rubber or vinyl) .... Inside diameter - length  
O-ring ..... Section area - inside diameter  
Washer, shim, collar ..... Inside diameter - outside diameter - thickness (length)

- (2) Parts, which are to be supplied in the form of assemblies, are listed with an indentation of one letter's space, and a dot (.) is put

against the name of each part. If any two different assemblies (e.g., right and left side components) consist of almost the same type components, these two assemblies are listed in two lines, and then the names of component parts are listed in the subsequent lines with an indentation as mentioned earlier. The quantity of parts is given in the following manner; that is, in the case of parts being the same in type between the right and left, a total quantity of parts is given. On the other hand, if the right and left side parts are different in type, the quantity of part(s) on each side is given.

**Example**

Description	Q'ty
CARBURETOR ASS'Y, left	1
CARBURETOR ASS'Y, right	1
. JET, pilot	2
. NOZZLE, main	2
⋮	
. LEVER, starter, left	1
. LEVER, starter, right	1

**(3) Key to Symbols**

- U. R. . . . . Use size (thickness) and/or number as required
- U. N. . . . . Use as many as you need
- T . . . . . Number of teeth in a gear
- V . . . . . Voltage for light bulbs
- S . . . . . "S" type oil seal or "S" type circlip
- SD . . . . . "SD" type oil seal
- SO . . . . . "SO" type oil seal
- SW . . . . . "SW" type oil seal
- E . . . . . "E" type circlip
- R . . . . . "R" type circlip
- F/No. . . . . Frame No. (Applicable machine No.)

- (4) The right and left in relation to parts are determined on the basis of the rider facing toward the front.
- (5) This Parts List is based on the model in the production line on Apr., 30, 1977. Accordingly, if any modifications which have been made to parts will be announced in the Yamaha Parts News. It is advisable that according to the Yamaha Parts News, You will make necessary corrections to the Parts List on hand to keep it up-to dated.

# CONTENTS

18077

## ENGINE

Fig. 1	Crankcase · Cylinder .....	1
Fig. 2	Crankcase Cover .....	3
Fig. 3	Crank · Piston .....	5
Fig. 4	Clutch .....	9
Fig. 5	Transmission .....	11
Fig. 6	Shifter 1 .....	15
Fig. 7	Shifter 2 .....	17
Fig. 8	Kick Starter .....	19
Fig. 9	Intake .....	21
Fig. 10	Carburetor .....	23
Fig. 11	Exhaust .....	27
Fig. 12	Oil Pump .....	29
Fig. 13	Flywheel Magneto .....	31

## CHASSIS

Fig. 14	Frame · Side Cover .....	35
Fig. 15	Rear Arm · Rear Cushion · Chain Case .....	39
Fig. 16	Stand · Footrest · Brake Pedal .....	41
Fig. 17	Front Fender · Rear Fender .....	43
Fig. 18	Front Fork (FS1) .....	45
Fig. 19	Front Fork (FS1-DX) .....	47
Fig. 20	Steering .....	49
Fig. 21	Handle · Wire (FS1) .....	51
Fig. 22	Handle · Wire (FS1-DX) .....	55
Fig. 23	Master Cylinder · Brake Hose (FS1-DX) .....	59
Fig. 24	Fuel Tank .....	61
Fig. 25	Oil Tank .....	63
Fig. 26	Seat .....	65

Fig. 27	Front Wheel (FS1) .....	67
Fig. 28	Front Wheel (FS1-DX) .....	71
Fig. 29	Disk Brake . Caliper (FS1-DX) .....	73
Fig. 30	Rear Wheel .....	75
Fig. 31	Head Lamp .....	79
Fig. 32	Speedometer .....	81
Fig. 33	Tail Lamp .....	83
Fig. 34	Flasher Lamp .....	85
Fig. 35	Electrical .....	87

## REPAIR KIT

Fig. 36	Repair Kit .....	93
---------	------------------	----

## NUMERICAL INDEX

CRANKCASE - CYLINDER

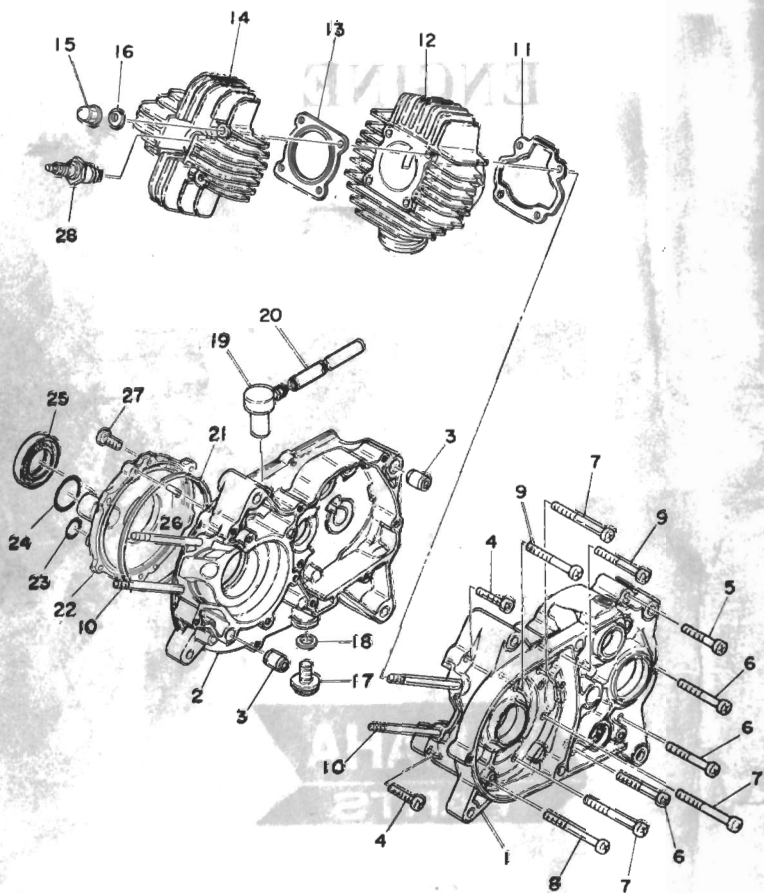
# ENGINE



**YAMAHA**  
**PARTS**



Fig. 1 CRANKCASE · CYLINDER

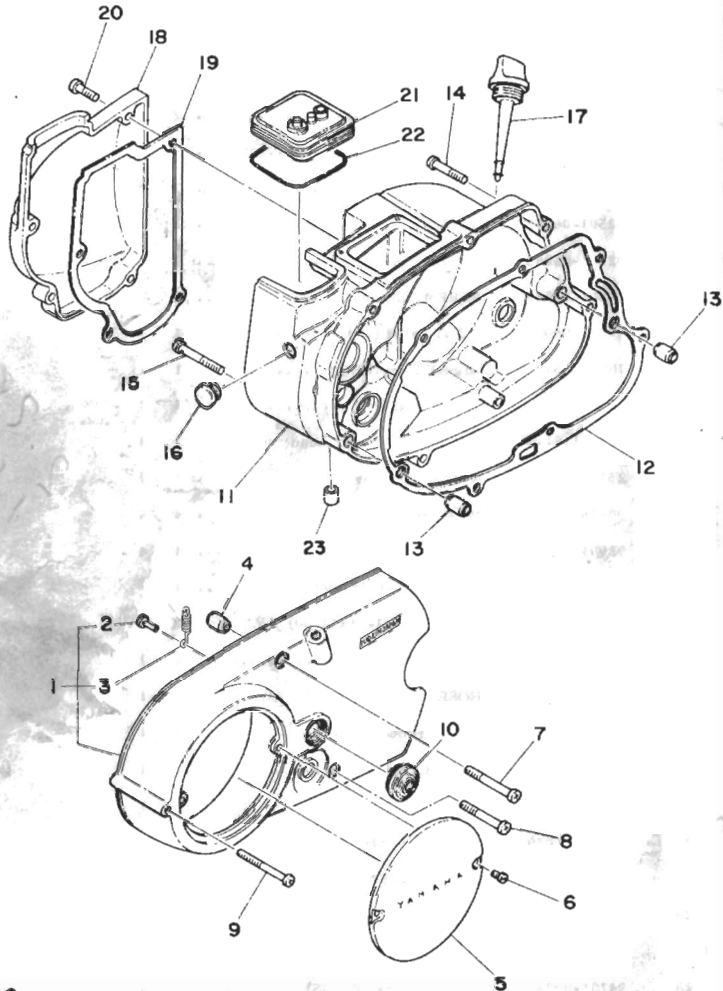


Ref. No.	Parts No.	Description	Q'ty		Applicable Machine No.	Remarks
			PSI	PSDX		
1- 1	257-15111-01	CASE, crank left	1	1		
1- 2	257-15121-01	CASE, crank right	1	1		
1- 3	91830-22016	PIN, dowel (8.4=12-16)	2	2		
1- 4	92501-06030	SCREW, panhead	2	2		
1- 5	92501-06045	SCREW, panhead	1	1		
1- 6	92501-06050	SCREW, panhead	3	3		
1- 7	92501-06060	SCREW, panhead	3	3		
1- 8	92501-06065	SCREW, panhead	1	1		
1- 9	92501-06055	SCREW, panhead	2	2		
1-10	90116-06026	BOLT, stud (109-11361-00)	4	4		
1-11	109-11351-00	GASKET, cylinder	1	1		
1-12	257-11311-00	CYLINDER	1	1		
1-13	517-11181-00	GASKET, cylinder head	1	1		
1-14	257-11111-01-94	HEAD, cylinder	1	1		
1-15	90176-06002	NUT, cap (126-11171-60)	4	4		
1-16	92901-06200	WASHER, plain	4	4		
1-17	90340-12005	PLUG (132-15351-00)	1	1		
1-18	90430-12038	GASKET (132-15353-00)	1	1		
1-19	498-15371-00	BREATHER	1	1		
1-20	90446-07009	HOSE (304-15373-00 5-200)	1	1		
1-21	180-13554-00	RING, rubber	1	1		
1-22	257-13551-00	COVER, valve	1	1		
1-23	93210-12014	O-RING (2.62-10.77)	1	1		
1-24	93210-23029	O-RING (3.53-21.82)	1	1		
1-25	93103-28012	OIL SEAL (SW-28-47-8)	1	1		
1-26	93604-14012	PIN, dowel (4-13.8)	2	2		
1-27	92501-06015	SCREW, panhead	6	6		
1-28	94701-00040	PLUG, spark (B-7HS)	1	1		

Handwritten note: 1-25



Fig. 2 CRANKCASE COVER

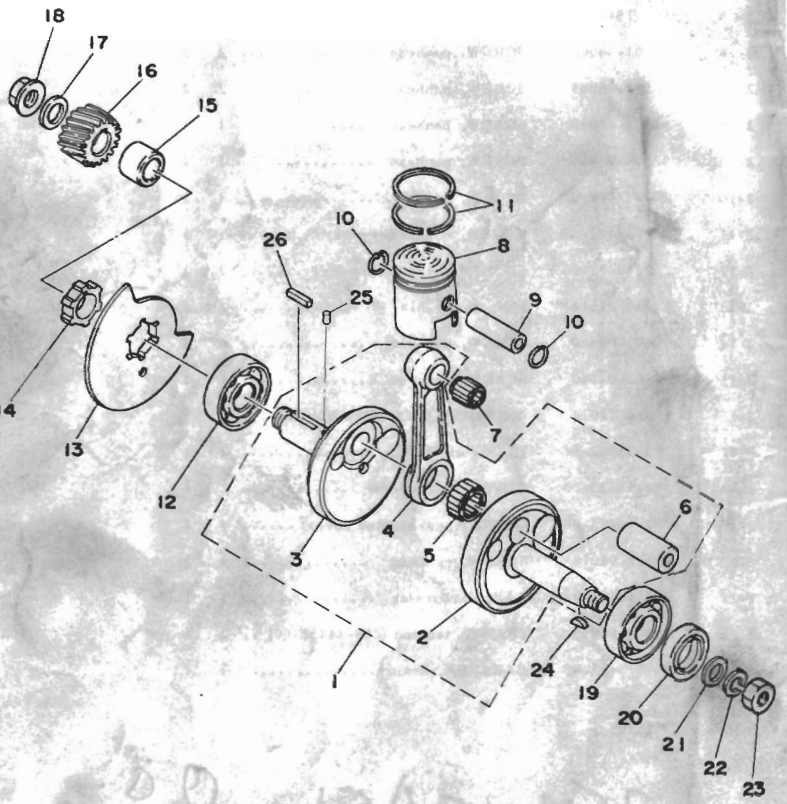


Ref. No.	Parts No.	Description	Q'ty FSI FSDX	Applicable Machine No.	Remarks
2- 1	257-15410-01	CRANKCASE COVER ASS'Y, left	1	1	
2- 2	132-16346-00	. HOOK, spring	1	1	
2- 3	90506-07066	. SPRING, tension (257-16345-00)	1	1	
2- 4	91830-21014	PIN, dowel (6.4-10-14)	2	2	
2- 5	164-15415-00	COVER, generator	1	1	
2- 6	98501-04006	SCREW, panhead	2	2	
2- 7	92501-06045	SCREW, panhead	2	2	
2- 8	92501-06040	SCREW, panhead	1	1	
2- 9	92501-06050	SCREW, panhead	1	1	
2-10	257-15417-01	COVER, cap	1	1	
2-11	257-15421-01	COVER, crankcase right	1	1	
2-12	257-15451-00	GASKET, crankcase cover	1	1	
2-13	91830-21014	PIN, dowel (6.4-10-14)	2	2	
2-14	92501-06030	SCREW, panhead	6	6	
2-15	92501-06040	SCREW, panhead	1	1	
2-16	90480-12012	GROMMET (122-15486-00)	1	1	
2-17	315-15362-01	PLUG, oil level	1	1	
2-18	257-15413-00	COVER, carburetor	1	1	
2-19	257-15463-00	GASKET, carburetor cover	1	1	
2-20	92501-06018	SCREW, panhead	4	4	
2-21	288-14481-01	CAP, carburetor	1	1	
2-22	90506-06095	SPRING, tension (288-14455-00)	1	1	
2-23	257-15433-00	CLEANER, drain	1	1	

257-15451-00

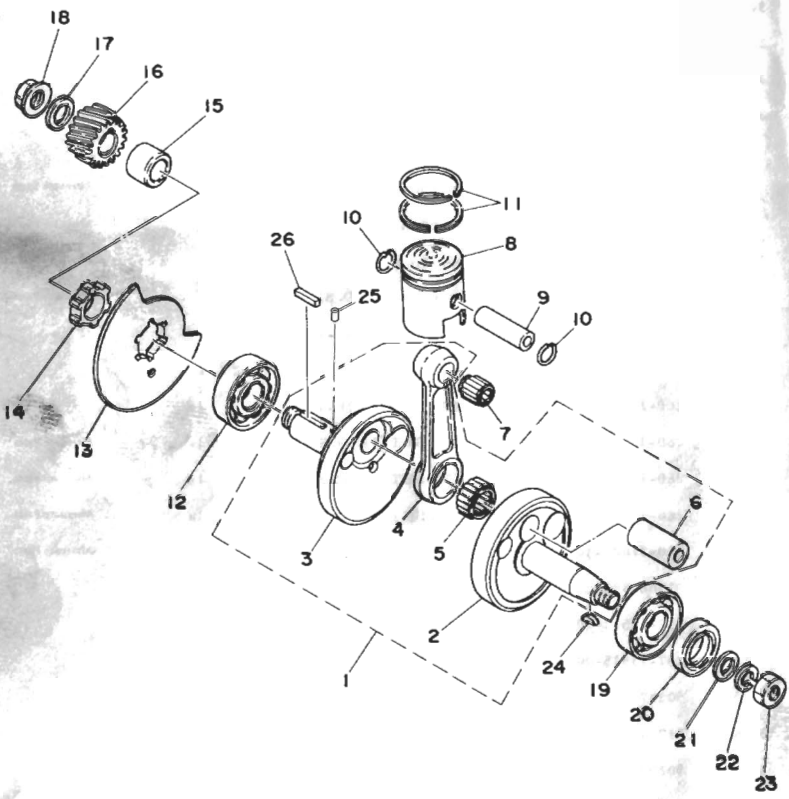


Fig. 3 CRANK · PISTON



Ref. No.	Parts No.	Description	Q'ty FR. RHD	Applicable Machine No.	Remarks
3- 1	355-11400-01	CRANK ASS'Y .....	1	1	
3- 2	257-11412-01	. CRANK, left .....	1	1	
3- 3	257-11422-01	. CRANK, right .....	1	1	
3- 4	517-11651-00	. ROD, connecting .....	1	1	
3- 5	93310-41810	. BEARING, big end .....	1	1	
3- 6	257-11681-00	. PIN, crank .....	1	1	
3- 7	93310-11268	BEARING, small end .....	1	1	
3- 8	109-11631-02-96	PISTON (39.96mm STD) .....	1	UR	} U.R. U.R. Alternate Parts
	109-11631-02-98	PISTON (39.98mm STD) .....	1	UR	
	109-11635-02	PISTON (40.25mm 1st O.S) .....	1	1	
	109-11636-02	PISTON (40.50mm 2nd O.S) .....	1	1	
	109-11637-02	PISTON (40.75mm 3rd O.S) .....	1	1	
	109-11638-02	PISTON (41.00mm 4th O.S) .....	1	1	Alternate Parts
3- 9	102-11633-02	PIN, piston .....	1	1	
3-10	93450-13022	CIRCLIP (132-11634-00) .....	2	2	
3-11	260-11601-00	PISTON RING SET (STD) .....	1s	1s	
	260-11601-10	PISTON RING SET (1st O.S) .....	1s	1s	Alternate Parts
	260-11601-20	PISTON RING SET (2nd O.S) .....	1s	1s	Alternate Parts
	260-11601-30	PISTON RING SET (3rd O.S) .....	1s	1s	Alternate Parts
	260-11601-40	PISTON RING SET (4th O.S) .....	1s	1s	Alternate Parts
3-12	93306-30302	BEARING (B6303C3) .....	1	1	
3-13	257-13512-00	VALVE .....	1	1	
3-14	257-13515-00	COLLAR, valve .....	1	1	
3-15	90387-17135	COLLAR (257-16136-60) .....	1	1	
3-16	257-16111-01	GEAR, primary drive (19T) .....	1	1	
3-17	90208-12015	WASHER (164-16119-00) .....	1	1	
3-18	90179-12044	NUT (353-16144-00) .....	1	1	
3-19	93306-20418	BEARING (B6204) .....	1	1	
3-20	93102-20009	OIL SEAL (SD-20-35-7) .....	1	1	

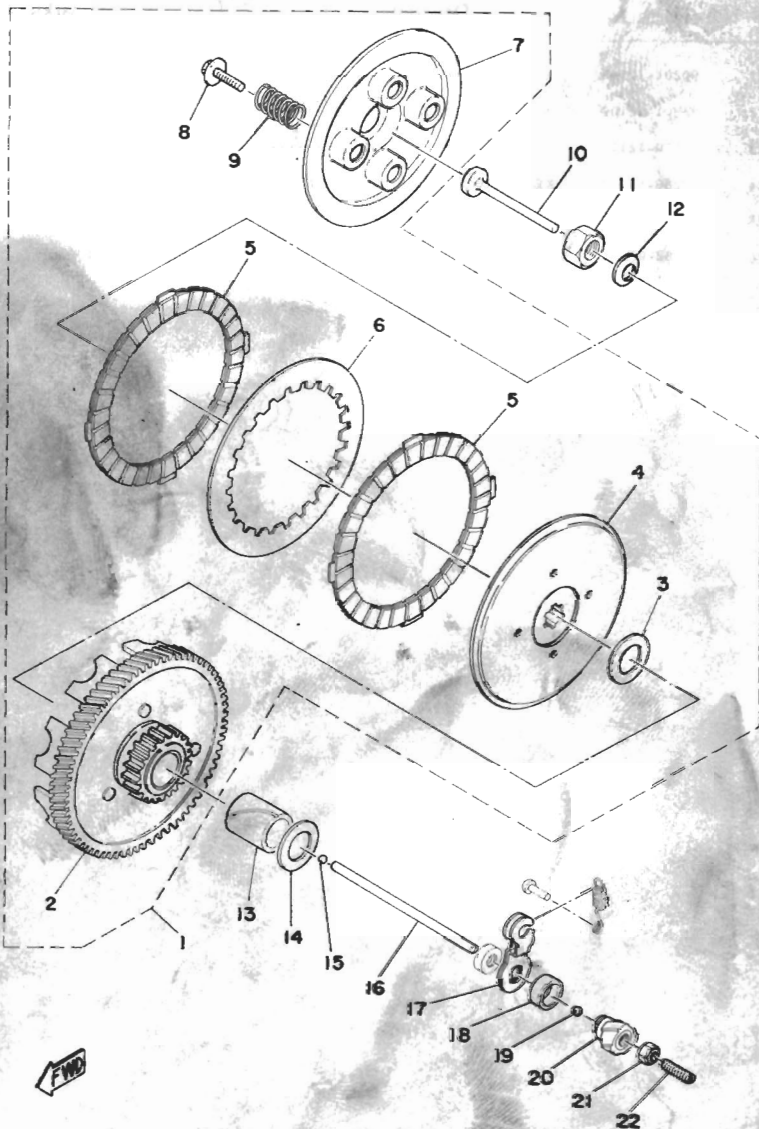
Fig. 3 CRANK · PISTON



Ref. No.	Parts No.	Description	Q'ty		Remarks
			FS1	FS10A	
3-21	90201-12535	WASHER, plate	1	1	
3-22	92901-12100	WASHER, spring	1	1	
3-23	90170-12175	NUT, hexagon	1	1	
3-24	90280-03017	KEY, woodruff (146-11545-00)	1	1	
3-25	93603-08067	PIN, dowel	1	1	
3-26	90282-05028	KEY, straight	1	1	

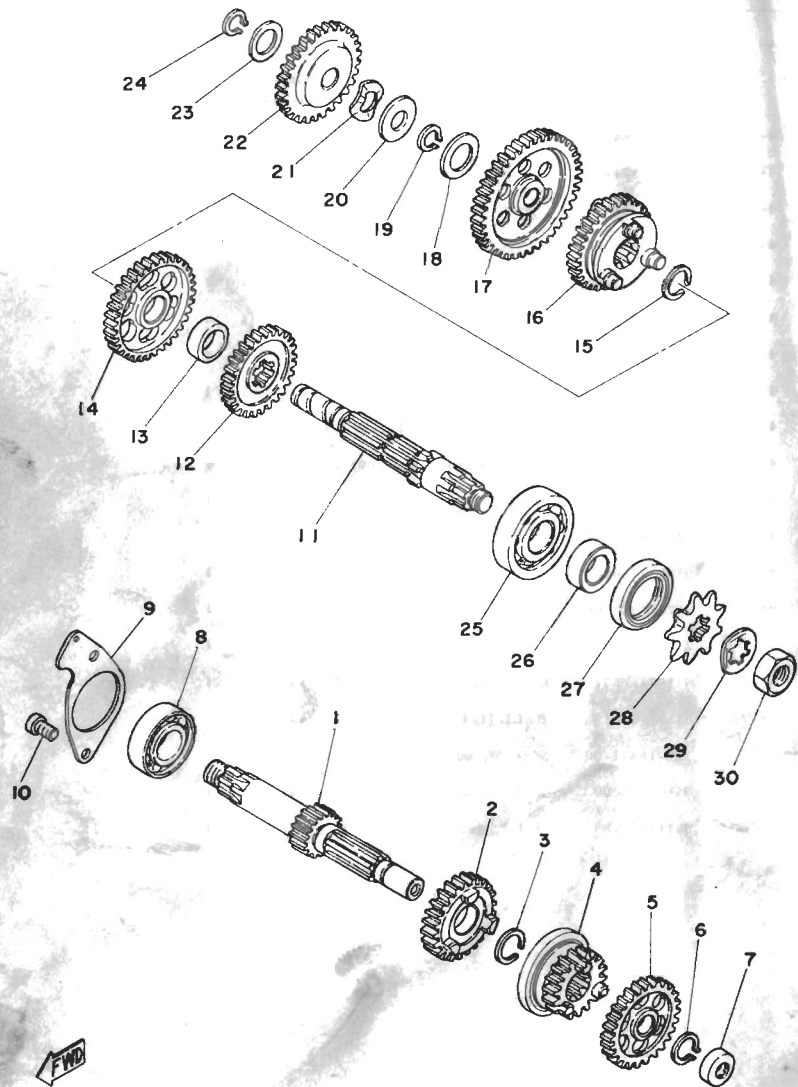


Fig. 4 CLUTCH



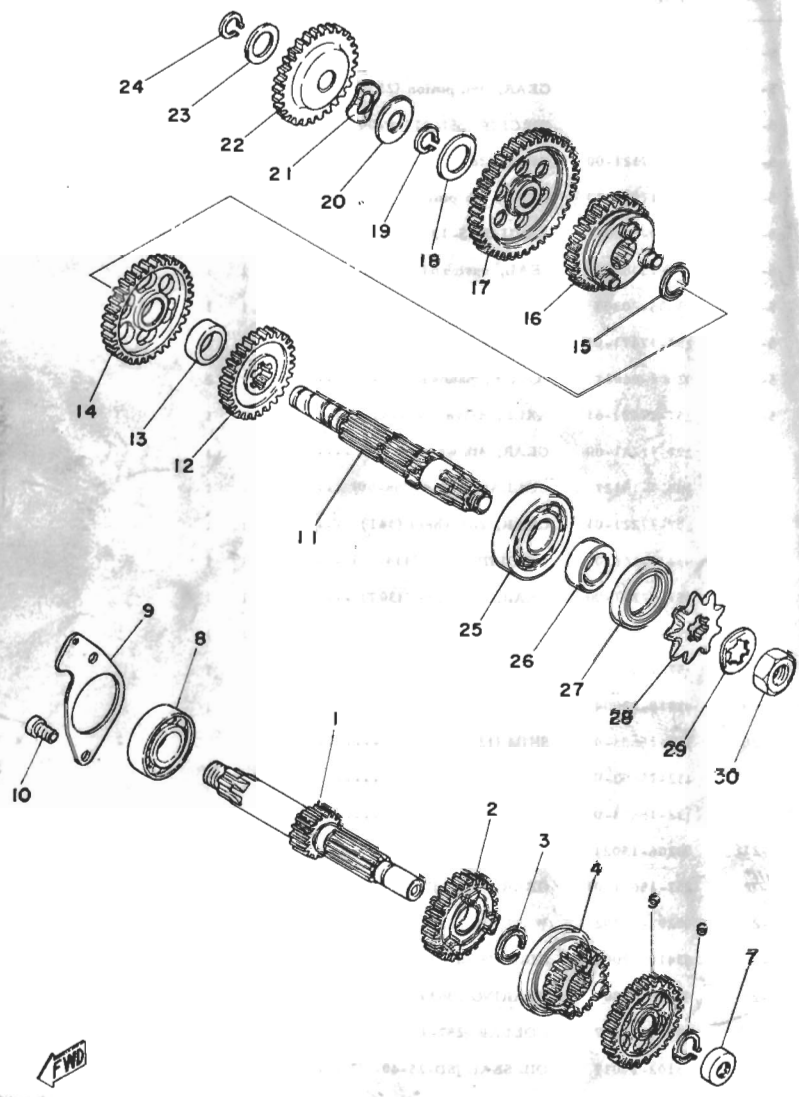
Ref. No.	Parts No.	Description	Q'ty	Applicable Machine No.	Remarks
4- 1	257-16301-03	CLUTCH ASS'Y	1	1	
4- 2	257-16150-03	PRIMARY DRIVEN GEAR COMP. (74T)	1	1	
4- 3	122-16164-00	PLATE, thrust (17.2-30-2)	1	1	
4- 4	257-16371-01	BOSS, clutch	1	1	
4- 5	131-16321-00	PLATE, friction	2	2	
4- 6	257-16324-00	PLATE, clutch	1	1	
4- 7	257-16351-00	PLATE, pressure	1	1	
4- 8	90119-05001	BOLT	4	4	
4- 9	90501-20122	SPRING (137-16333-00)	4	4	
4-10	137-16356-00	ROD, push 1	1	1	
4-11	90170-12060	NUT, hexagon (137-16377-00)	1	1	
4-12	90208-12015	WASHER (164-16119-00)	1	1	
4-13	90560-17150	SPACER	1	1	
4-14	122-16164-00	PLATE, thrust (17.2-30-2)	1	1	
4-15	93503-16010	BALL (3/16 inch)	1	1	
4-16	257-16357-00	ROD, push 2	1	1	
4-17	257-16342-00	LEVER, push	1	1	
4-18	93108-13001	OIL SEAL (OSO-15.3-22-7)	1	1	
4-19	93501-04011	BALL (1/4 inch)	1	1	
4-20	257-16341-00	SCREW, push	1	1	
4-21	95301-06700	NUT, hexagon	1	1	
4-22	90113-06009	BOLT, set (257-16343-00)	1	1	

Fig. 5 TRANSMISSION



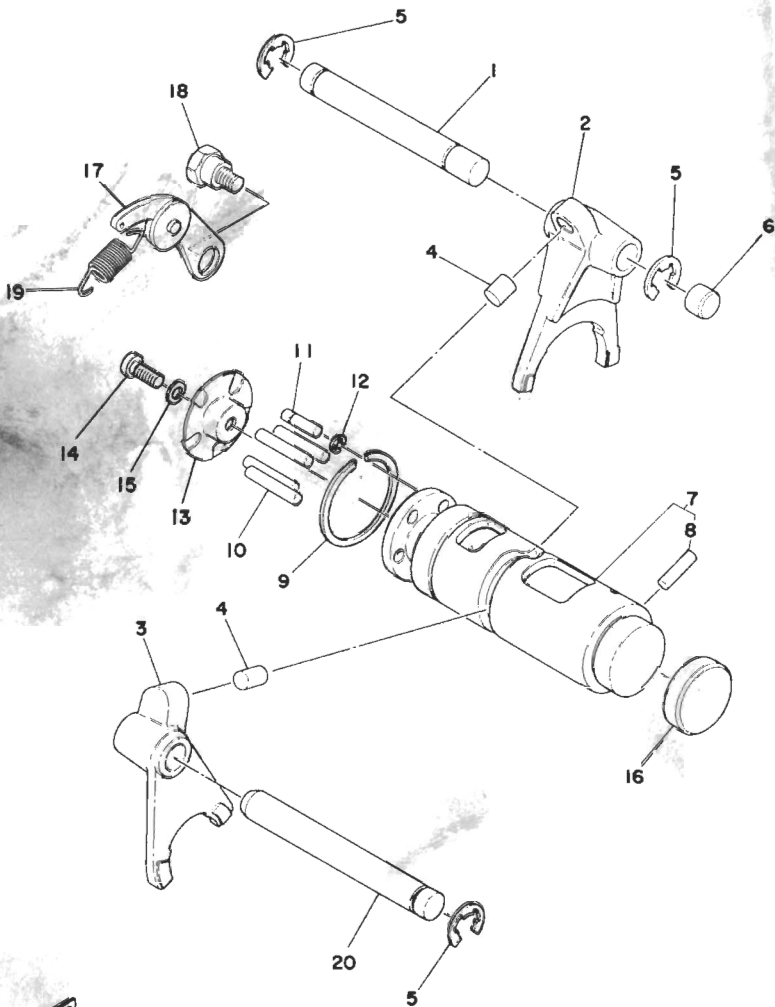
Ref. No.	Parts No.	Description	Q'ty		Remarks
			FSI	FSIDX	
5- 1	257-17411-01	AXLE, main (13T) .....	1	1	
5- 2	257-17131-01	GEAR, 3rd pinion (23T) .....	1	1	
5- 3	93440-16030	CIRCLIP (257-17414-00) .....	1	1	
5- 4	257-17121-00	GEAR, 2nd pinion (18T) .....	1	1	
5- 5	257-17141-00	GEAR, 4th pinion (26T) .....	1	1	
5- 6	93410-13004	CIRCLIP (S-13) .....	1	1	
5- 7	257-15389-00	SEAL, push rod .....	1	1	
5- 8	93306-20303	BEARING (B6203Z) .....	1	1	
5- 9	257-17471-01	PLATE, bearing cover .....	1	1	
5-10	92501-06012	SCREW, panhead .....	2	2	
5-11	257-17421-01	AXLE, drive .....	1	1	
5-12	257-17241-00	GEAR, 4th wheel (27T) .....	1	1	
5-13	90387-16127	COLLAR (257-17258-00) .....	1	1	
5-14	257-17221-01	GEAR, 2nd wheel (34T) .....	1	1	
5-15	93440-16030	CIRCLIP (257-17414-00) .....	1	1	
5-16	257-17231-00	GEAR, 3rd wheel (30T) .....	1	1	
5-17	257-17211-00	GEAR, 1st wheel (40T) .....	1	1	
5-18	257-17219-00	SHIM .....	1	1	
5-19	93410-13004	CIRCLIP (S-13) .....	1	1	
5-20	132-15653-00-10	SHIM (13.3-22-1.0) .....	}	ULR ULR 1 1	
	132-15653-00-12	SHIM (13.3-22-1.2) .....			
	132-15653-00-14	SHIM (13.3-22-1.4) .....			
5-21	90206-15021	WASHER, wave (137-15643-00) ...	1	1	
5-22	257-15651-01	GEAR, kick idle (26T) .....	1	1	
5-23	90201-13202	WASHER, plate (201-15653-00) ...	1	1	
5-24	93410-13004	CIRCLIP (S-13) .....	1	1	
5-25	93306-30305	BEARING (B6303) .....	1	1	
5-26	90387-17137	COLLAR (257-17462-00) .....	1	1	
5-27	93102-25017	OIL SEAL (SD-25-40-5) .....	1	1	

Fig. 5 TRANSMISSION



Ref. No.	Parts No.	Description	Q'ty	Applicable Machine No.	Remarks
			FSI	FSI	
5-28	257-17461-31	SPROCKET, drive (13T) .....	1	U.R. U.R.	STD
	257-17461-41	SPROCKET, drive (14T) .....			
	257-17461-51	SPROCKET, drive (15T) .....			
5-29	90215-13010	WASHER, lock .....	1	1	
5-30	90179-12181	NUT .....	1	1	

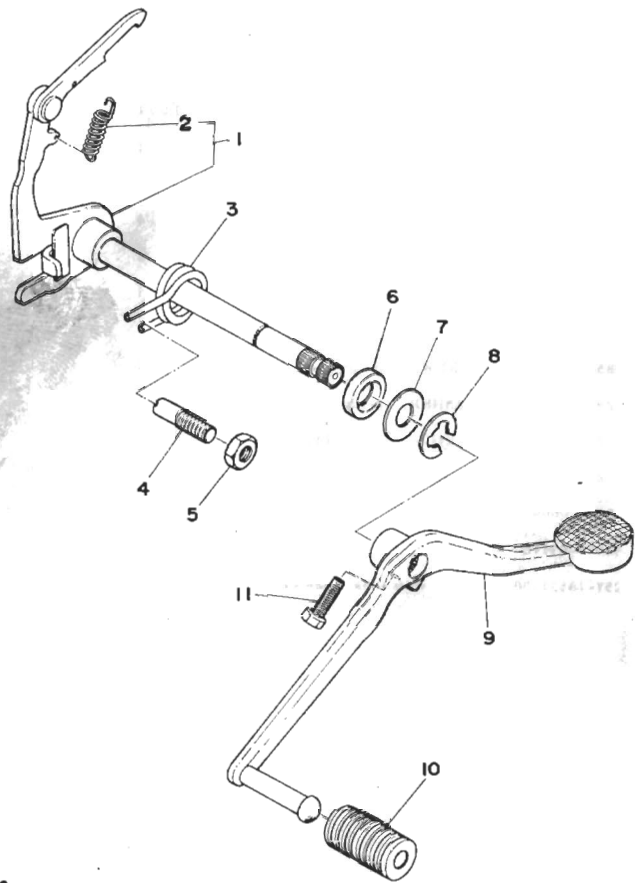
Fig. 6 SHIFTER 1



Ref. No.	Parts No.	Description	Q'ty	Applicable Machine No.	Remarks
			FSI	FS10X	
6-1	257-18534-00	BAR, shift fork guide	1	1	
6-2	259-18511-01	FORK, shift 1	1	1	
6-3	257-18512-01	FORK, shift 2	1	1	
6-4	90250-06013	PIN, straight (257-18552-00)	2	2	
6-5	93430-08006	CIRCLIP (E-8)	3	3	
6-6	90334-10006	PLUG, straight (150-18328-00)	1	1	
6-7	257-18541-61	CAM, shift	1	4	
6-8	93605-20043	PIN, dowel (5-19.8)	1	1	
6-9	93440-32017	CIRCLIP (32 $\phi$ special)	1	1	
6-10	93604-22050	PIN, dowel (4-21.8)	4	4	
6-11	90249-04039	PIN (174-18544-00)	1	1	
6-12	93430-03014	CIRCLIP (E-2.5)	1	3	
6-13	164-18561-00	PLATE, side	1	1	
6-14	98501-05012	SCREW, panhead	1	1	
6-15	92901-05100	WASHER, spring	1	1	
6-16	90338-26008	PLUG (257-18589-00)	1	1	
6-17	132-18140-01	STOPPER LEVER ASS'Y	1	1	
6-18	90109-06001	BOLT (132-18177-00)	1	1	
6-19	90506-09112	SPRING, tension	1	1	
6-20	257-18531-00	BAR, shift fork guide	1	1	



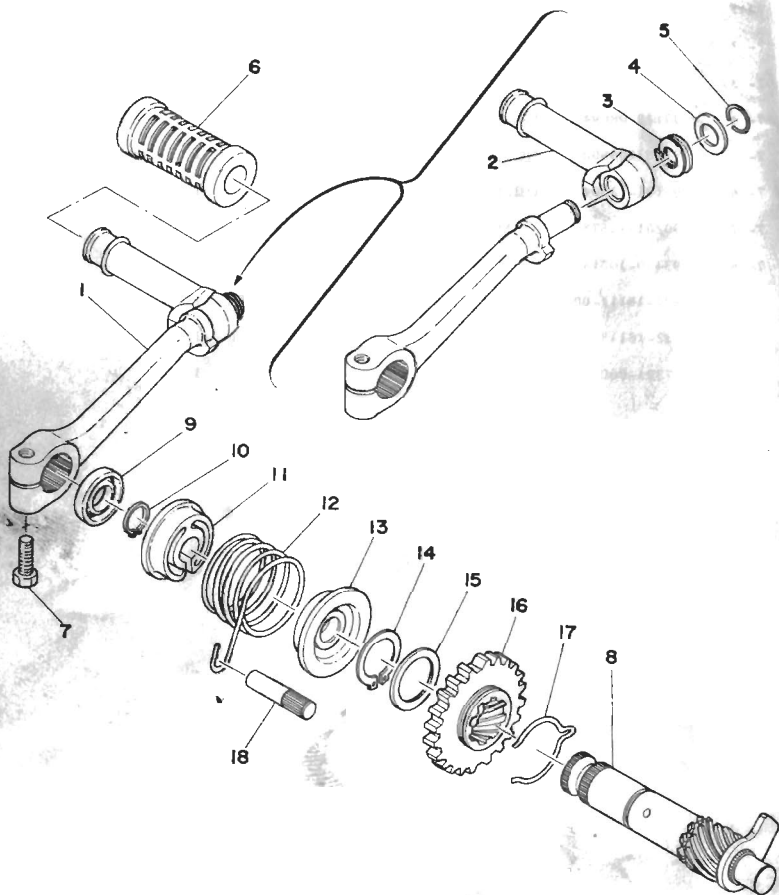
Fig. 7 SHIFTER 2



Ref. No.	Parts No.	Description	Q'ty	Applicable Machine No.	Remarks
7- 1	257-18101-01	CHANGE SHAFT ASS'Y .....	1	1	
7- 2	90506-09009	. SPRING, tension (132-18123-00)	1	1	
7- 3	90508-32207	SPRING, torsion (132-18124-00)...	1	1	
7- 4	90149-08094	SCREW .....	1	1	
7- 5	95301-08600	NUT, hexagon .....	1	1	
7- 6	93101-12004	OIL SEAL (S-12-22-5) .....	1	1	
7- 7	90201-12575	WASHER, plate (12.1-26-1.6) ....	1	1	
7- 8	93430-10016	CIRCLIP (E-10) .....	1	1	
7- 9	257-18111-00-91	PEDAL, change .....	1	1	
7-10	132-18113-01	COVER, change pedal .....	1	1	
7-11	97321-06020	BOLT, hexagon .....	1	1	



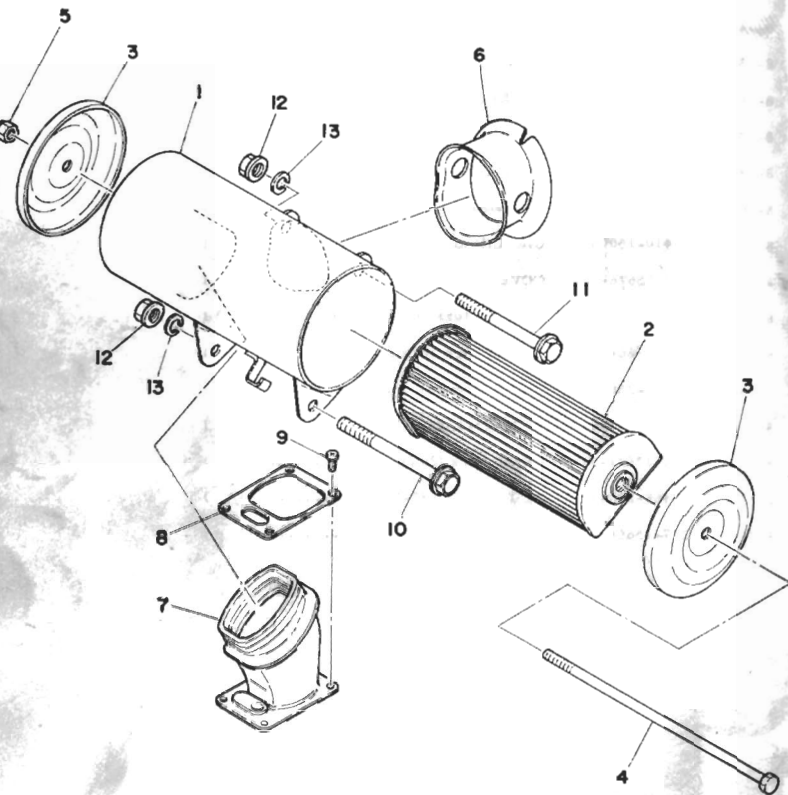
Fig. 8 KICK STARTER



Ref. No.	Parts No.	Description	Q'ty	Applicable Machine No.	Remarks
8- 1	257-15610-02-91	KICK CRANK ASS'Y	1	1	
8- 2	122-15612-02	LEVER, kick	1	1	
8- 3	90504-18005	SPRING, compression (132-15625-01)	1	1	
8- 4	90209-10108	WASHER (132-15616-01)	1	1	
8- 5	93440-10028	CIRCLIP (132-15617-00)	1	1	
8- 6	156-15618-01	COVER, kick lever	1	1	
8- 7	97311-06025	BOLT, hexagon	1	1	
8- 8	305-15660-02	KICK AXLE ASS'Y	1	1	
8- 9	93109-15001	OIL SEAL (SDO-15-26-6)	1	1	
8-10	93410-15005	CIRCLIP (S-15)	1	1	
8-11	132-15676-01	COVER, kick spring	1	1	
8-12	90508-26136	SPRING, torsion (304-15665-00)	1	1	
8-13	132-15664-01	GUIDE, kick spring	1	1	
8-14	93410-25017	CIRCLIP (S-25)	1	1	
8-15	117-15644-00	SHIM (25.1-32-1)	1	1	
8-16	305-15641-00	GEAR, kick (26T)	1	1	
8-17	90468-26048	CLIP (315-15687-00)	1	1	
8-18	257-15668-00	STOPPER, kick spring	1	1	



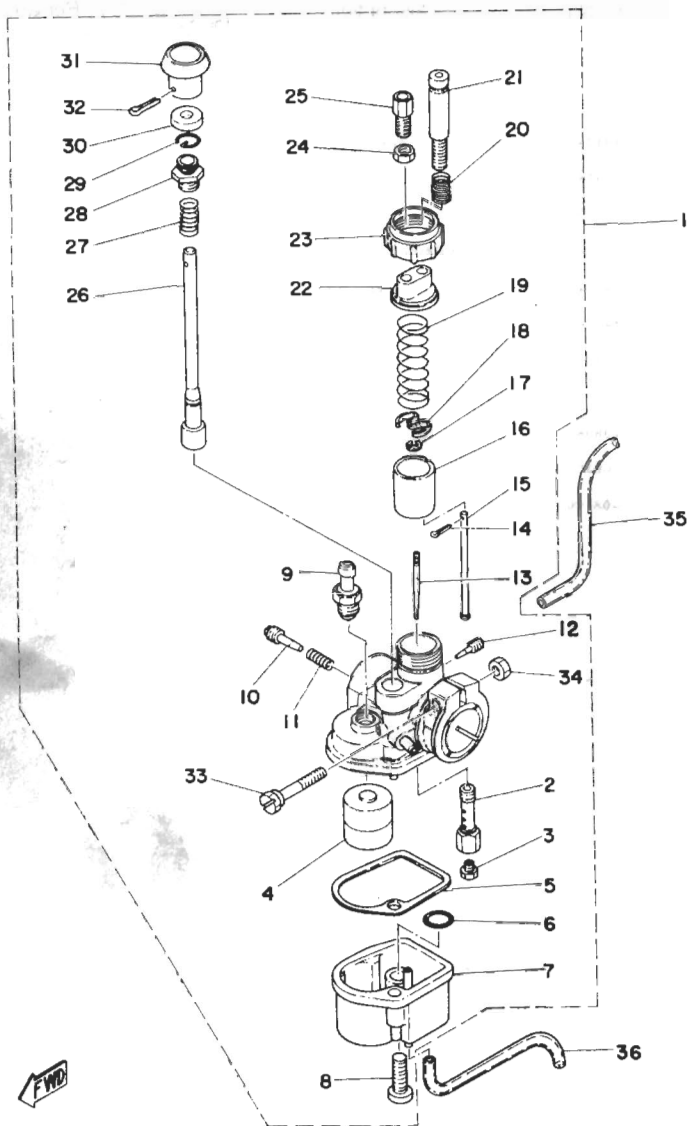
Fig. 9 INTAKE



Ref. No.	Parts No.	Description	Q'ty		Applicable Machine No.	Remarks
			FSI	FSIDX		
9- 1	257-14401-00-35	AIR CLEANER CASE ASS'Y .....	1	1		Sliver
9- 2	257-14451-00	ELEMENT, air cleaner .....	1	1		
9- 3	122-14412-00	CAP, cleaner case .....	2	2		
9- 4	97301-06185	BOLT, hexagon .....	1	1		
9- 5	95303-06800	NUT, crown .....	1	1		
9- 6	257-14454-00	JOINT, suction pipe .....	1	1		
9- 7	257-14453-00	JOINT, air cleaner .....	1	1		
9- 8	257-14417-00	COVER, joint .....	1	1		
9- 9	98501-04008	SCREW, panhead .....	4	4		
9-10	95821-08100	BOLT, flange .....	1	1		
9-11	95821-08080	BOLT, flange .....	1	1		
9-12	95701-08100	NUT, flange .....	2	2		
9-13	92901-08100	WASHER, spring .....	2	2		

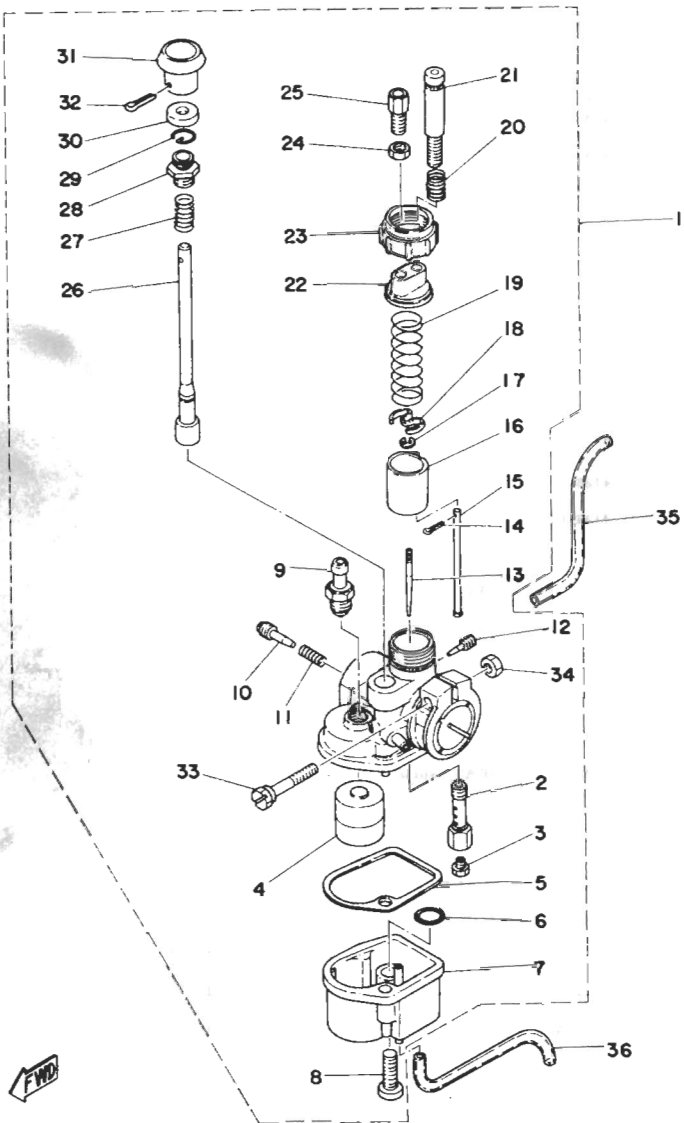


Fig. 10 CARBURETOR



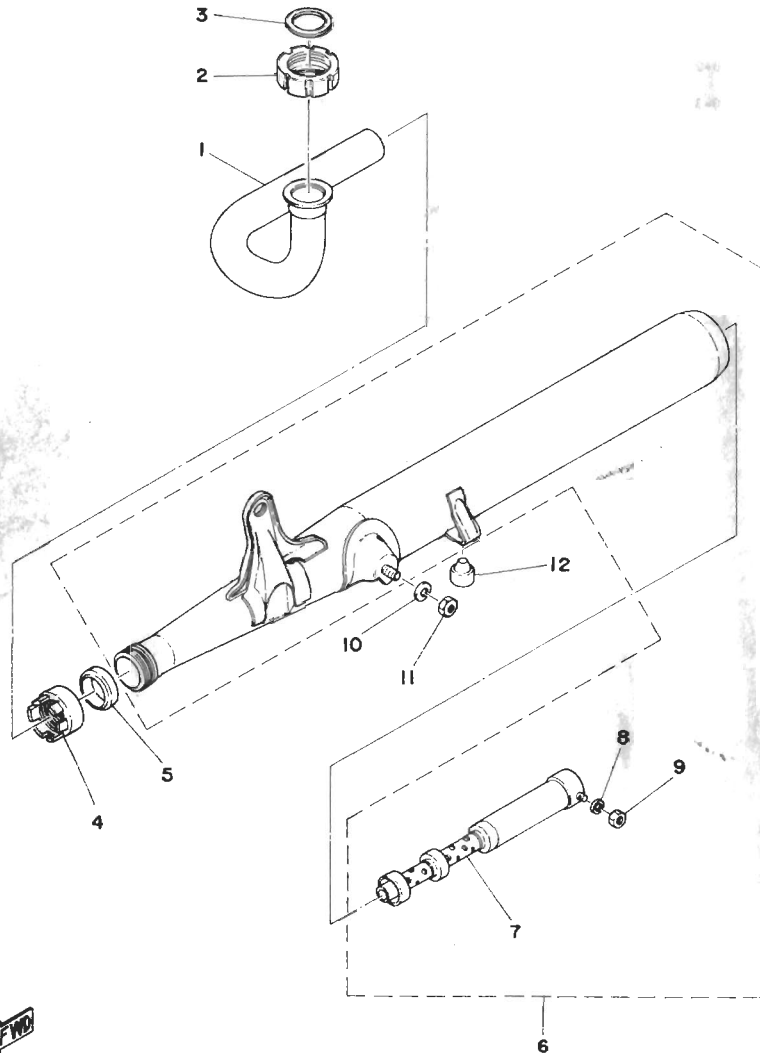
Ref. No.	Parts No.	Description	Q'ty		Remarks
			Applicable FSI/SDX	Machine No.	
10- 1	596-14101-00	CARBURETOR ASS'Y	1	1	
10- 2	127-14141-14	NOZZLE, main (E-4)	1	1	
10- 3	127-14143-28	JET, main (#140)	1	1	UR UR STD
	127-14143-30	JET, main (#150)			
	127-14143-32	JET, main (#160)			
10- 4	355-14185-00	FLOAT	1	1	
10- 5	260-14184-00	GASKET, float chamber	1	1	
10- 6	93220-08002	O-RING	1	1	
10- 7	260-14181-10	BODY, float chamber	1	1	
10- 8	92501-06018	SCREW, panhead	1	1	
10- 9	260-14190-12	VALVE SEAT ASS'Y (1.2)	1	1	
10-10	127-14123-00	SCREW, air adjusting	1	1	
10-11	127-14134-00	SPRING, air adjusting	1	1	
10-12	260-14142-25	JET, pilot (#25)	1	1	
10-13	127-14116-09	NEEDLE (3G9-3)	1	1	
10-14	91401-12010	PIN, cotter	1	1	
10-15	405-14114-00	BAR, throttle	1	1	
10-16	257-14112-15	VALVE, throttle (#1.5)	1	1	
10-17	127-14137-00	CLIP	1	1	
10-18	287-14136-00	SEAT, spring	1	1	
10-19	127-14131-00	SPRING, throttle valve	1	1	
10-20	127-14133-00	SPRING, throttle stop	1	1	
10-21	395-14121-00	SCREW, throttle	1	1	
10-22	180-14158-01	TOP, mixing chamber	1	1	
10-23	180-14168-00	CAP, mixing chamber	1	1	
10-24	127-14161-00	NUT, wire adjusting	1	1	
10-25	127-14124-23	SCREW, wire adjusting	1	1	
10-26	395-14171-00	PLUNGER, starter	1	1	
10-27	156-14135-00	SPRING, plunger	1	1	

Fig. 10 CARBURETOR



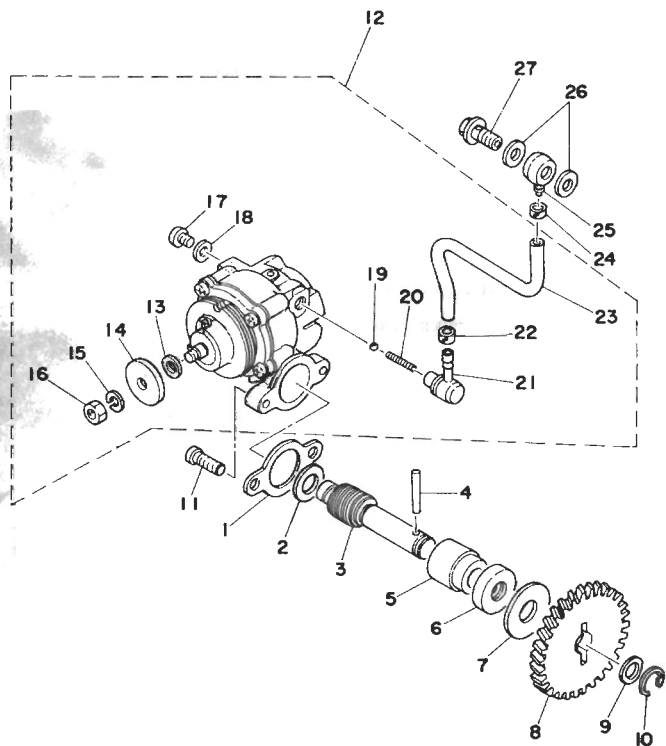
Ref. No.	Parts No.	Description	Q'ty	Applicable Machine No.	Remarks
10-28	152-14174-00	. CAP, plunger .....	1	1	
10-29	353-14138-00	. CLIP, plunger .....	1	1	
10-30	637-14173-00	. COVER, plunger cap .....	1	1	
10-31	304-14261-00	. HOLDER .....	1	1	
10-32	91401-16015	. PIN, cotter .....	1	1	
10-33	127-14125-01	. SCREW, body fitting .....	1	1	
10-34	95302-05600	. NUT, hexagon .....	1	1	
10-35	90445-05015	HOSE (257-14197-00 2.5-200) ....	1	1	
10-36	90445-05013	HOSE (137-14197-00 2.5-150) ....	1	1	

Fig. 11 EXHAUST



Ref. No.	Parts No.	Description	Q'ty		Applicable Machine No.	Remarks
			FS1	FS1DX		
11- 1	348-14611-00	PIPE, exhaust	1	1		
11- 2	122-14612-02	NUT, ring	1	1		
11- 3	132-11613-00	GASKET, exhaust	1	1		
11- 4	115-14713-00	NUT, muffler joint	1	1		
11- 5	115-14714-00	GASKET, muffler joint	1	1		
11- 6	1Y1-14710-00	MUFFLER ASS'Y	1	1		
11- 7	348-14753-00	SILENCER	1	1		
11- 8	92901-05100	WASHER, spring	1	1		
11- 9	95301-05600	NUT, hexagon	1	1		
11-10	92901-08100	WASHER, spring	1	1		
11-11	95301-08600	NUT, hexagon	1	1		
11-12	1M3-27114-00	STOPPER, main stand	1	1		

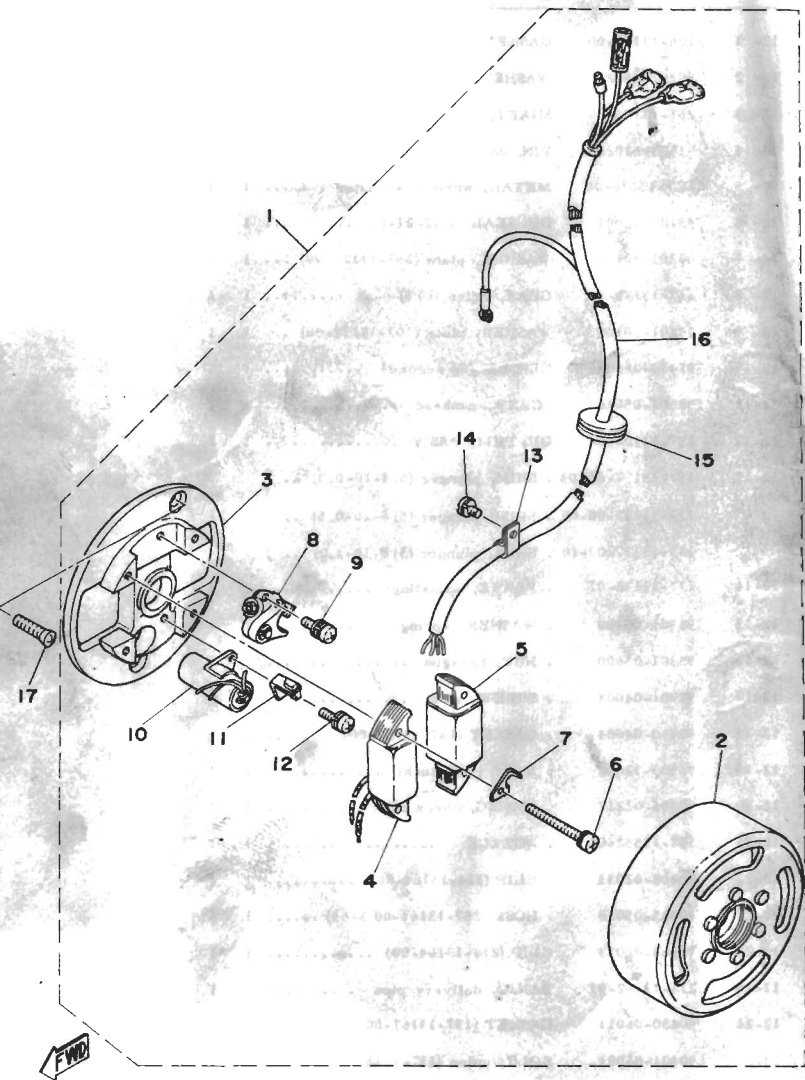
Fig. 12 OIL PUMP



Ref. No.	Parts No.	Description	Q'ty		Remarks
			FSI	FSI/ Machine No.	
12- 1	126-13116-00	GASKET, pump case	1	1	
12- 2	90201-08624	WASHER, plate	1	1	
12- 3	257-13175-00	SHAFT, worm	1	1	
12- 4	93603-22028	PIN, dowel	1	1	
12- 5	1E7-13176-00	METAL, worm shaft outer	1	1	
12- 6	93101-10001	OIL SEAL (S-10-21-5)	1	1	
12- 7	90201-10138	WASHER, plate (257-13177-00)	1	1	
12- 8	257-13178-00	GEAR, drive (30T)	1	1	
12- 9	90201-10135	WASHER, plate (102-18138-00)	1	1	
12-10	93430-08006	CIRCLIP (8φ special)	1	1	
12-11	98501-05016	SCREW, panhead	2	2	
12-12	257-13101-04	OIL PUMP ASS'Y	1	1	
12-13	137-13137-00-03	. SHIM, plunger (5.8-10-0.3)	1	1	ULR ULR
	137-13137-00-05	. SHIM, plunger (5.8-10-0.5)			
	137-13137-00-10	. SHIM, plunger (5.8-10-1.0)			
12-14	137-13138-01	. PLATE, adjusting	1	1	
12-15	92901-05100	. WASHER, spring	1	1	
12-16	95301-05600	. NUT, hexagon	1	1	
12-17	98901-04008	. SCREW, bind	1	1	
12-18	90430-04004	. GASKET (137-13187-00)	1	1	
12-19	93505-32002	. BALL (5/32 inch)	1	1	
12-20	90501-02217	. SPRING, check ball	1	1	
12-21	353-13552-01	. NOZZLE	1	1	
12-22	90468-02033	. CLIP (214-13164-00)	1	1	
12-23	90445-05018	. HOSE (257-13161-00 3-65)	1	1	
12-24	90468-02033	CLIP (214-13164-00)	1	1	
12-25	214-13162-01	BANJO, delivery pipe	1	1	
12-26	90430-06011	GASKET (137-13167-00)	2	2	
12-27	90401-06001	BOLT, union (137-13165-00)	1	1	

FWD

Fig. 13 FLYWHEEL MAGNETO



Ref. No.	Parts No.	Description	Q'ty		Remarks
			FSI	FS1DX	
13- 1	257-81300-23	FLYWHEEL MAGNETO ASS'Y . . . . .	1	1	
13- 2	257-81350-22	. ROTOR ASS'Y . . . . .	1	1	
13- 3	257-81309-21	. BASE, magneto . . . . .	1	1	
13- 4	207-81312-21	. COIL, source . . . . .	1	1	
13- 5	207-81313-21	. COIL, lighting . . . . .	1	1	
13- 6	110-81348-21	. SCREW (4-25) . . . . .	4	4	
13- 7	353-81332-20	. PLATE, timing . . . . .	1	1	
13- 8	437-81321-20	. CONTACT BREAKER ASS'Y . . . . .	1	1	
13- 9	OR 120-51321-20 110-81346-21	. SCREW (4-10) . . . . .	1	1	
13-10	1K8-81325-20	. CONDENSER . . . . .	1	1	
13-11	116-81331-20	. LUBRICATOR . . . . .	1	1	
13-12	110-81347-21	. SCREW (4-10) . . . . .	1	1	
13-13	104-81328-20	. CLAMP, lead . . . . .	1	1	
13-14	110-81345-21	. SCREW (4-6) . . . . .	1	1	
13-15	90480-16110	. GROMMET (164-82597-00) . . . . .	1	1	
13-16	257-81315-20	. LEAD WIRE ASS'Y . . . . .	1	1	
13-17	98701-05015	SCREW, flathead . . . . .	2	2	

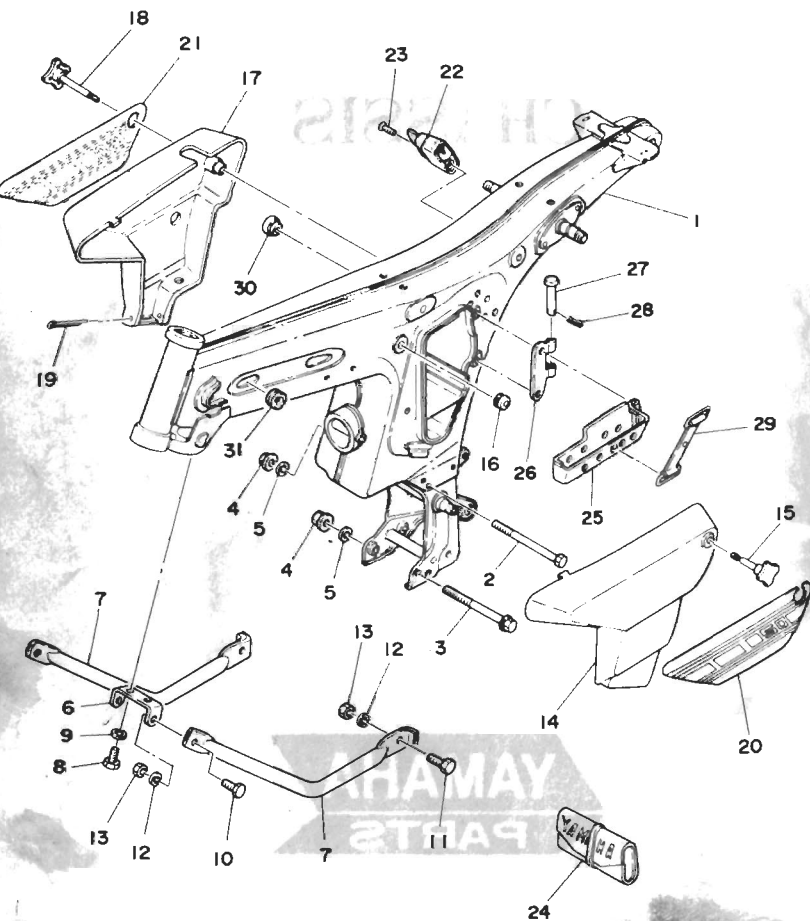


# CHASSIS



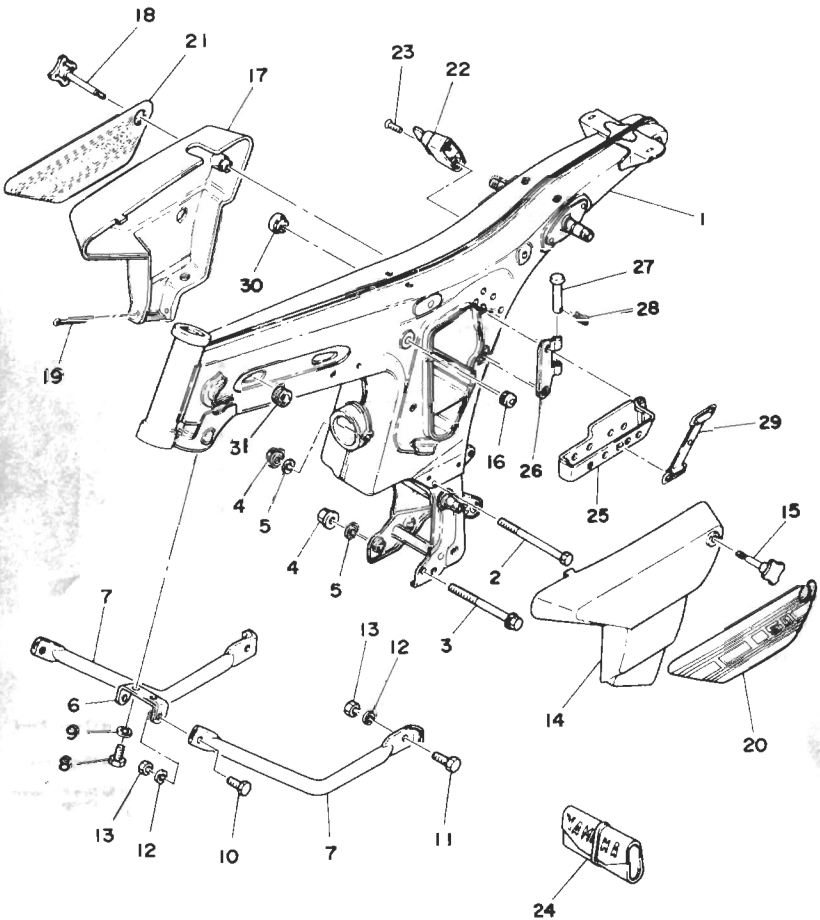
**YAMAHA**  
**PARTS**

Fig. 14 FRAME · SIDE COVER



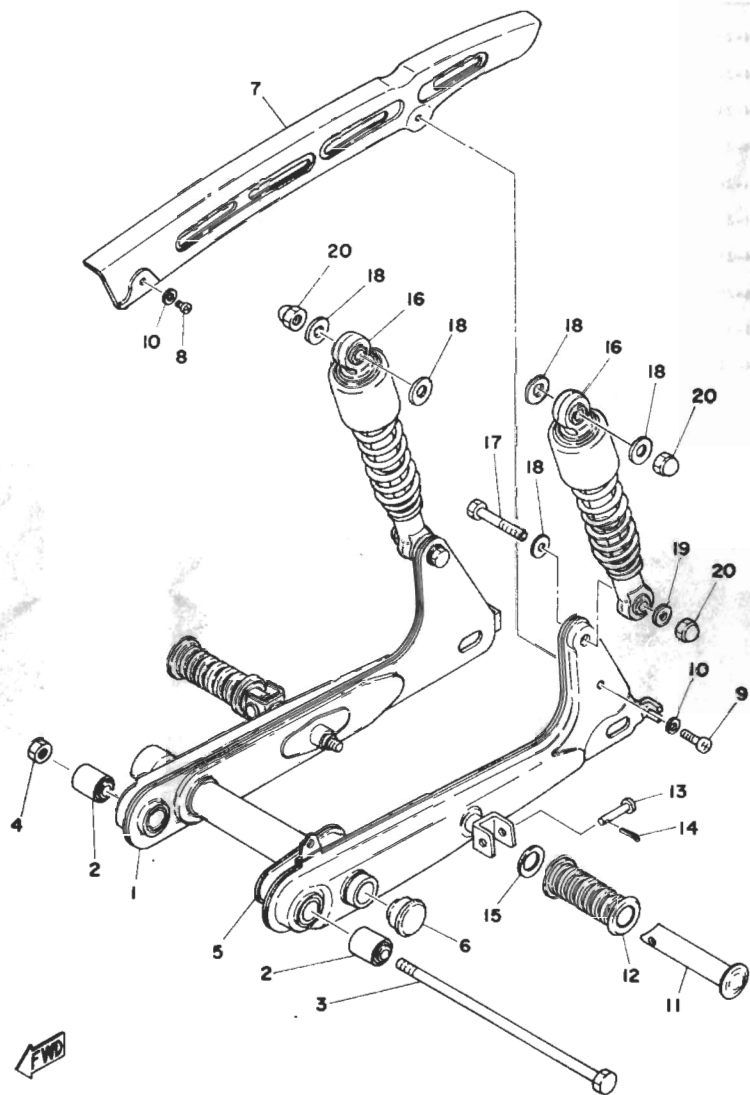
Ref. No.	Part No.	Description	Q'ty		Applicable Machine No.	Remarks
			FSI	FSIX		
14- 1	355-21110-03-33	FRAME COMP. ....	1	1		Yamaha Black
14- 2	90101-08285	BOLT, hexagon ....	1	1		
14- 3	95821-08120	BOLT, flange ....	1	1		
14- 4	95701-08100	NUT, flange ....	2	2		
14- 5	92901-08100	WASHER, spring ....	2	2		
14- 6	596-21158-00-33	BRACKET, down tube ....	1			Yamaha Black
14- 7	596-21191-00-33	DOWN TUBE ....	2			Yamaha Black
14- 8	97301-06014	BOLT, hexagon ....	2			
14- 9	92901-06100	WASHER, spring ....	2			
14-10	97301-08016	BOLT, hexagon ....	2			
14-11	97301-08030	BOLT, hexagon ....	2			
14-12	92901-08100	WASHER, spring ....	4			
14-13	95301-08600	NUT, hexagon ....	4			
14-14	1Y1-21711-00	COVER, side left ....	1	1		
14-15	1Y1-21714-00	KNOB, side cover left ....	1	1		
14-16	90480-01141	DAMPER (371-21747-00) ....	2	2		
14-17	1Y1-21721-10	COVER, side right ....	1	1		
14-18	1Y1-21724-00	KNOB, side cover right ....	1	1		
14-19	91401-50085	PIN, cotter ....	1	1		
14-20	1Y1-21781-00	EMBLEM, side cover left ....	1	1		for Crystal Silver
	1Y1-21781-09	EMBLEM, side cover left ....	1	1		for Chrome Plated
	1Y1-21781-20	EMBLEM, side cover left ....	1	1		for Chappy Red
	1Y1-21781-30	EMBLEM, side cover left ....	1	1		for New Portuguese Orange
	1Y1-21781-40	EMBLEM, side cover left ....	1	1		for Space Blue
14-21	1Y1-21782-00	EMBLEM, side cover right ....	1	1		for Crystal Silver
	1Y1-21782-09	EMBLEM, side cover right ....	1	1		for Chrome Plated
	1Y1-21782-20	EMBLEM, side cover right ....	1	1		for Chappy Red
	1Y1-21782-30	EMBLEM, side cover right ....	1	1		for New Portuguese Orange
	1Y1-21782-40	EMBLEM, side cover right ....	1	1		for Space Blue

Fig. 14 FRAME · SIDE COVER



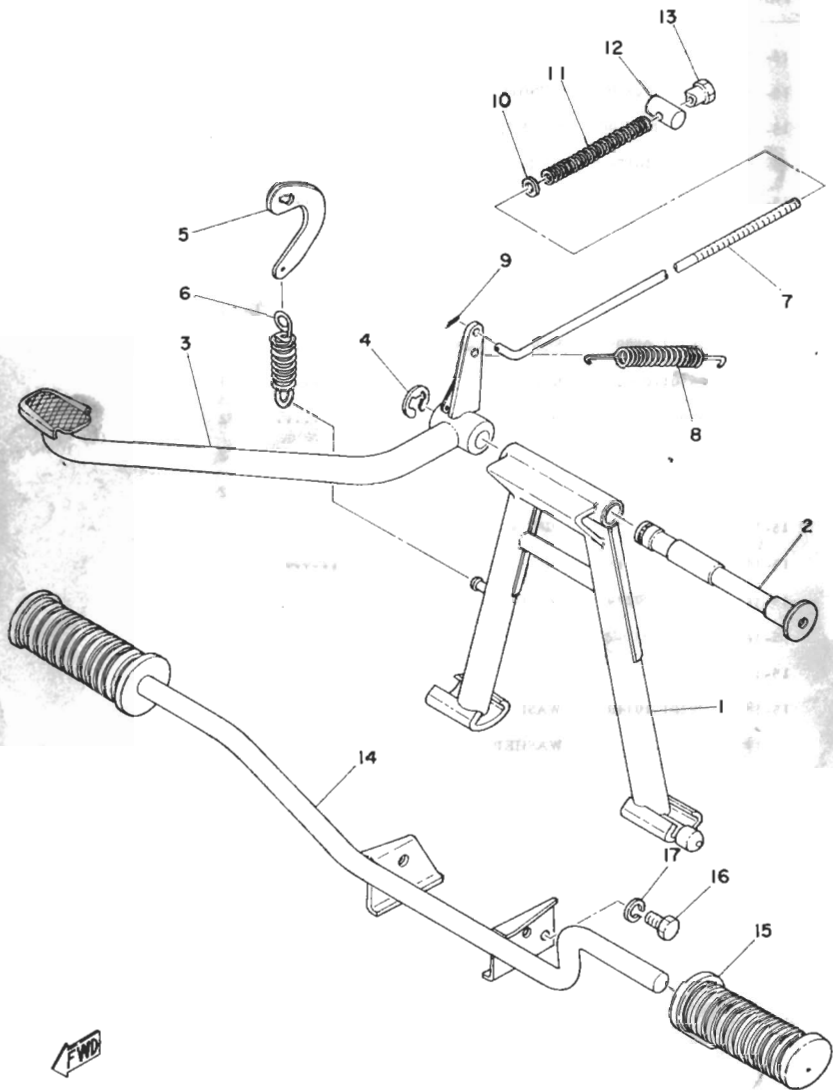
Ref. No.	Part No.	Description	Q'ty	Applicable Machine No.	Remarks
14-22	1J5-21308-00	HANGER, helmet	1	1	
14-23	92701-06030	SCREW, flathead	1	1	
14-24	260-28100-10	TOOL ASS'Y	1	1	
14-25	1Y1-21245-00	BOX, tool	1	1	
14-26	1Y1-21286-00	HINGE, tool box	1	1	
14-27	91701-06065	PIN, clevis	1	1	
14-28	90468-12007	CLIP (102-25375-00)	1	1	
14-29	133-82131-00	BAND, battery	1	1	
14-30	90460-13203	GROMMET	1	1	
14-31	90460-13016	GROMMET (136-82598-00)	1	1	

Fig. 15 REAR ARM · REAR CUSHION · CHAIN CASE



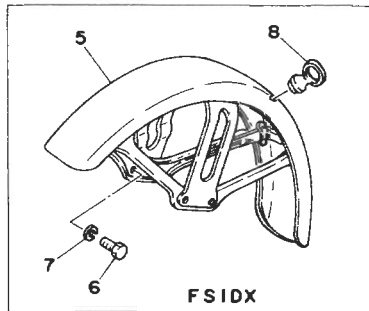
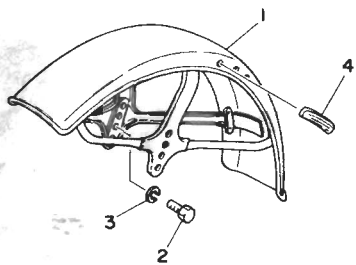
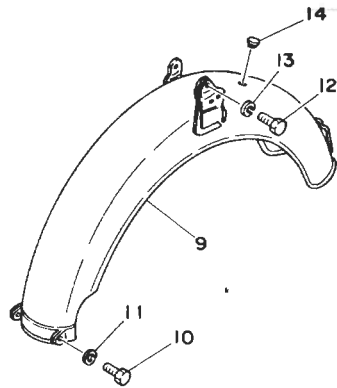
Ref. No.	Part No.	Description	Q'ty FSI FSDX	Applicable Machine No.	Remarks
15- 1	1X9-22110-00-33	REAR ARM COMP. ....	1	1	Yamaha Black
15- 2	102-22123-00	BUSHING, rear arm ....	2	2	
15- 3	109-22141-00	SHAFT, pivot ....	1	1	
15- 4	90170-10159	NUT, hexagon ....	1	1	
15- 5	122-22151-00	SEAL, guard ....	1	1	
15- 6	180-22117-00	CAP, rear arm ....	1	1	
15- 7	260-22311-00-35	CHAIN CASE, half ....	1	1	Silver
	260-22311-00-93	CHAIN CASE, half ....	1	1	Chrome Plated
15- 8	98501-05008	SCREW, panhead ....	1	1	
15- 9	98501-05020	SCREW, panhead ....	1	1	
15-10	92901-05600	WASHER, plate ....	2	2	
15-11	120-27431-00	ARM, rear footrest ....	2	2	
15-12	120-27433-00	COVER, rear footrest ....	2	2	
15-13	90240-06009	PIN, with hole ....	2	2	
15-14	91401-16015	PIN, cotter ....	2	2	
15-15	90201-20279	WASHER, plate ....	2	2	
15-16	1Y1-22210-20-93	REAR CUSHION ASS'Y ....	2	2	
15-17	90101-10255	BOLT ....	2	2	
15-18	90201-10140	WASHER, plate ....	6	6	
15-19	92901-10200	WASHER, plain ....	2	2	
15-20	90176-10013	NUT, cap ....	4	4	

Fig. 16 STAND · FOOTREST · BRAKE PEDAL



Ref. No.	Part No.	Description	Q'ty	Applicable Machine No.	Remarks
16- 1	207-27111-00	STAND, main	1	1	
16- 2	122-27112-00	SHAFT, main stand	1	1	
16- 3	257-27211-00-91	PEDAL, brake	1	1	
16- 4	93430-12008	CIRCLIP (E-12)	1	1	
16- 5	109-27115-00	LINK, main stand	1	1	
16- 6	90506-29054	SPRING, tension (122-27116-00)	1	1	
16- 7	180-27231-01	ROD, brake	1	1	
16- 8	90506-20041	SPRING, tension (109-27216-00)	1	1	
16- 9	91401-20012	PIN, cotter	1	1	
16-10	92901-06600	WASHER, plate	1	1	
16-11	90501-10245	SPRING, compression (180-27236-00)	1	1	
16-12	90249-12008	PIN (156-27237-00)	1	1	
16-13	90179-06176	NUT	1	1	
16-14	260-27411-00	FOOTREST	1	1	
16-15	122-27413-00	COVER, footrest	1	1	
16-16	90101-08246	BOLT, hexagon	1	1	
16-17	92901-08100	WASHER, spring	1	1	

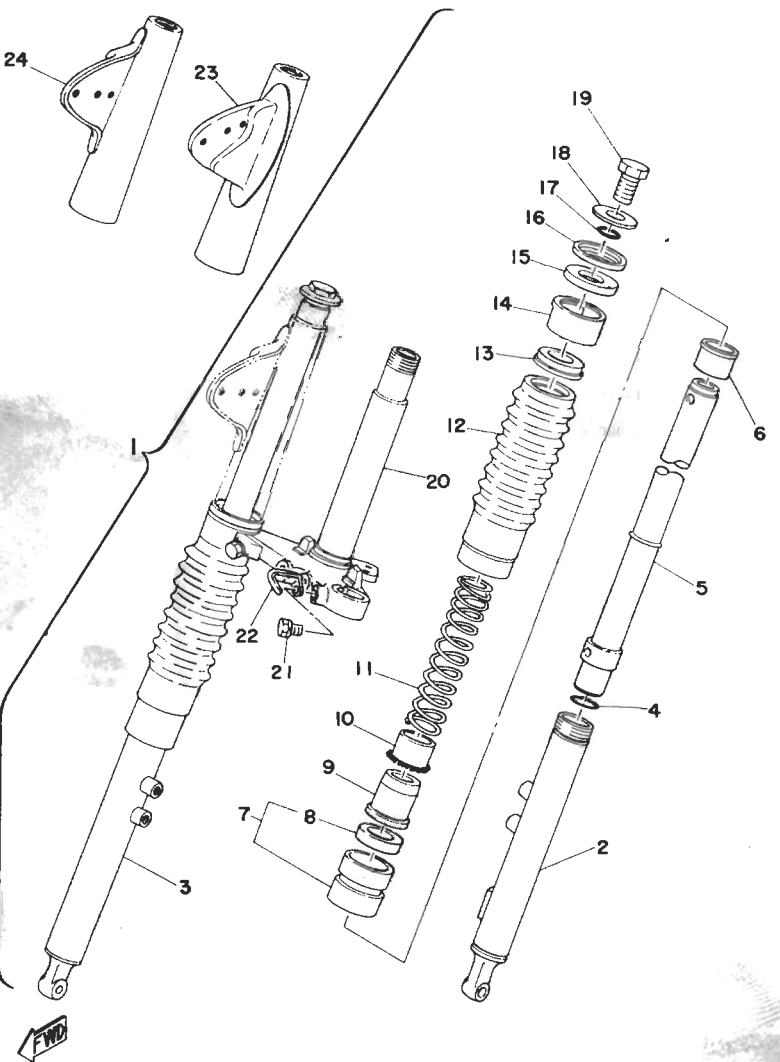
Fig. 17 FRONT FENDER · REAR FENDER



Ref. No.	Part No.	Description	Q'ty	Applicable Machine No.	Remarks
			FSI	FSIDX	
17- 1	1U1-21510-01-93	FRONT FENDER COMP. ....	1		
17- 2	97301-08012	BOLT, hexagon .....	4		
17- 3	92901-08100	WASHER, spring .....	4		
17- 4	122-21517-00	PAD, wire .....	1		
17- 5	481-21510-02-93	FRONT FENDER COMP. ....	1		
17- 6	90101-08281	BOLT, hexagon .....	2		
17- 7	92901-08100	WASHER, spring .....	2		
17- 8	1A0-21518-00	HOLDER, wire .....	1		
17- 9	1Y1-21610-00-93	REAR FENDER COMP. ....	1	1	
17-10	97301-06016	BOLT, hexagon .....	2	2	
17-11	92901-06600	WASHER, plate .....	2	2	
17-12	97301-08016	BOLT, hexagon .....	2	2	
17-13	92901-08100	WASHER, spring .....	2	2	
17-14	90480-12013	GROMMET (152-84518-00) .....	2	2	

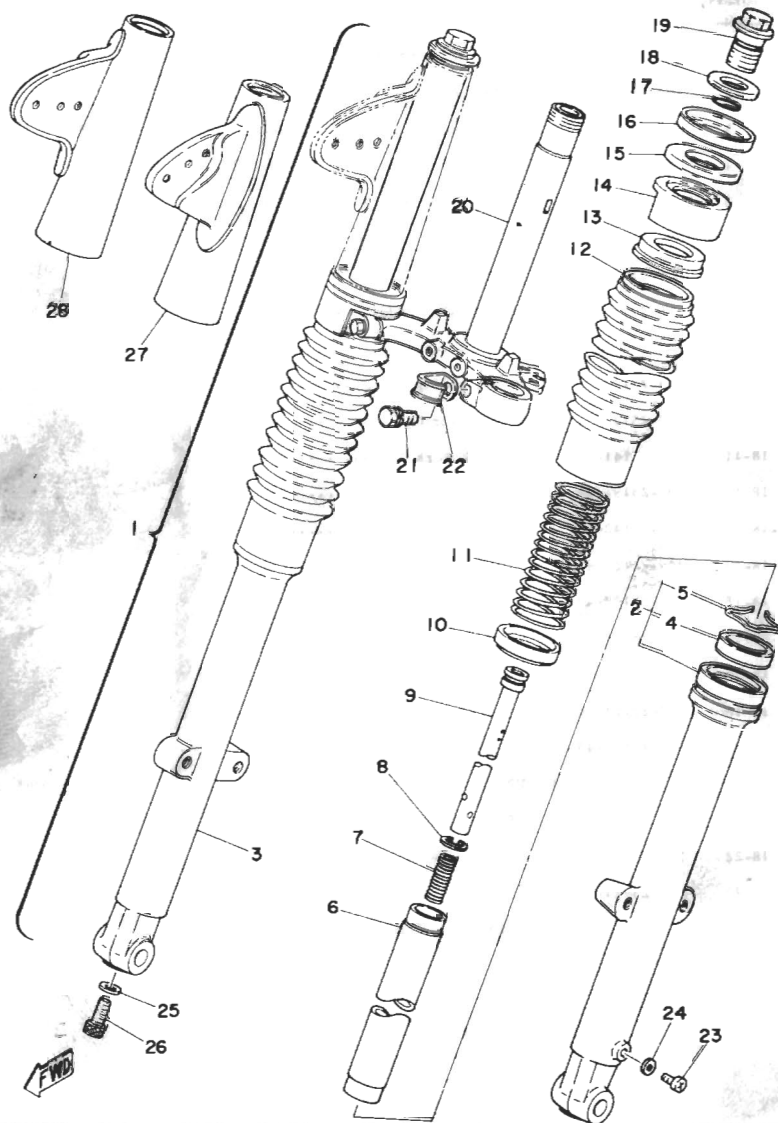


Fig. 18 FRONT FORK (FS1)



Ref. No.	Part No.	Description	Q'ty FS1 FS1DX	Applicable Machine No.	Remarks
18- 1	1U1-23101-11	FRONT FORK ASS'Y	1		
18- 2	1U1-23126-11-35	TUBE, outer left	1		Silver
18- 3	1U1-23136-11-35	TUBE, outer right	1		Silver
18- 4	207-23147-00	O-RING	2		
18- 5	355-23124-90	TUBE, inner left	1		
	355-23134-90	TUBE, inner right	1		
18- 6	109-23125-00	METAL, slide	2		
18- 7	209-23150-41	OUTER NUT COMP.	2		
18- 8	109-23145-01	OIL SEAL	2		
18- 9	109-23143-00	SEAT, spring under	2		
18-10	207-23117-00	GUIDE, spring	2		
18-11	207-23141-10	SPRING, fork	2		
18-12	196-23191-40	BOOT	2		
18-13	209-23142-40	SEAT, spring upper	2		
18-14	209-23122-40	COVER, outer left	2		
18-15	207-23163-00	PACKING	2		
18-16	207-23116-01	GUIDE, cover under	2		
18-17	307-23114-00	PACKING	2		
18-18	207-23112-00	WASHER, cap	2		
18-19	260-23111-40	BOLT, cap	2		
18-20	260-23340-30-33	UNDER BRACKET COMP.	1		Yamaha Black
18-21	122-23346-01	BOLT, under bracket	2		
18-22	260-23318-40	HOLDER, wire	1		
18-23	260-23121-40-33	COVER, upper left	1		Yamaha Black
18-24	260-23131-40-33	COVER, upper right	1		Yamaha Black

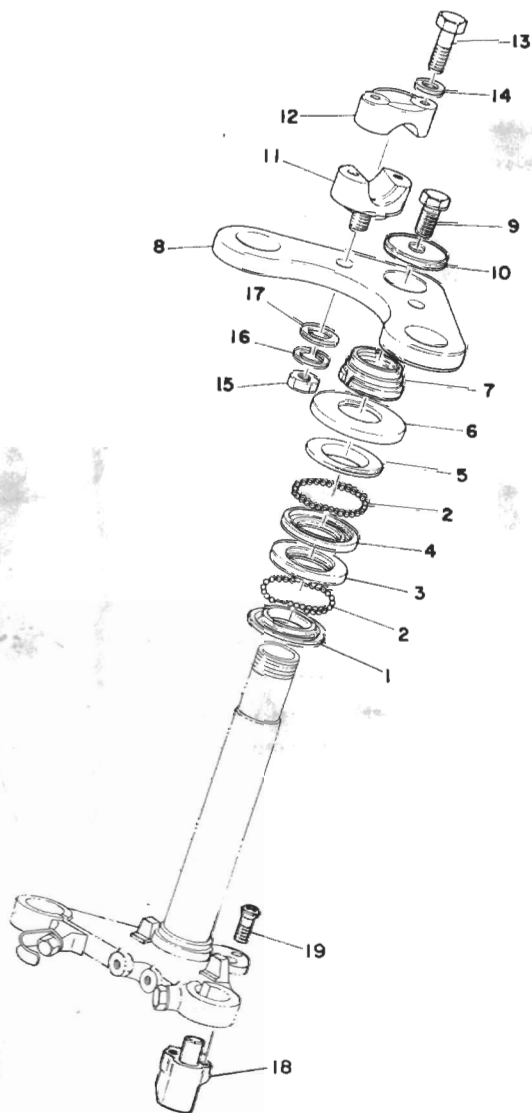
Fig. 19 FRONT FORK (FS1-DX)



Ref. No.	Part No.	Description	Q'ty	Applicable Machine No.	Remarks
19-1	1Y1-23101-00	FRONT FORK ASS'Y	1		
19-2	1Y1-23126-00	TUBE, outer left	1		
19-3	1Y1-23136-00	TUBE, outer right	1		
19-4	1T8-23145-00	OIL SEAL	2		
19-5	1T8-23156-00	CLIP, oil seal	2		
19-6	1Y1-23134-00	INNER TUBE GROMP.	2		
19-7	1Y1-23152-00	SPRING, front fork	2		
19-8	1Y1-23157-00	PISTON RING, front fork	2		
19-9	1Y1-23170-00	CYLINDER GROMP.	2		
19-10	596-23117-00	GUIDE, spring	2		
19-11	596-23141-00	SPRING, fork	2		
19-12	428-23191-00	ROOT	2		
19-13	209-23142-40	SEAT, spring upper	2		
19-14	1Y1-23122-00	COVER, outer	2		
19-15	207-23163-00	PACKING	2		
19-16	207-23116-01	GUIDE, cover under	2		
19-17	1T8-23114-00	PACKING	2		
19-18	1T8-23112-00	WASHER, cap	2		
19-19	1T8-23111-00	BOLT, cap	2		
19-20	596-23340-06-33	UNDER BRACKET COMP.	1		Yamaha Black
19-21	122-23346-01	BOLT, under bracket	2		
19-22	260-23318-46	HOLDER, wire	1		
19-23	122-23119-01	PLUG, drain	2		
19-24	122-23129-00	GASKET, drain plug	2		
19-25	1N1-23158-00	PACKING	2		
19-26	91311-08025	BOLT	2		
19-27	260-23121-40-33	COVER, upper left	1		Yamaha Black
19-28	260-23131-40-33	COVER, upper right	1		Yamaha Black

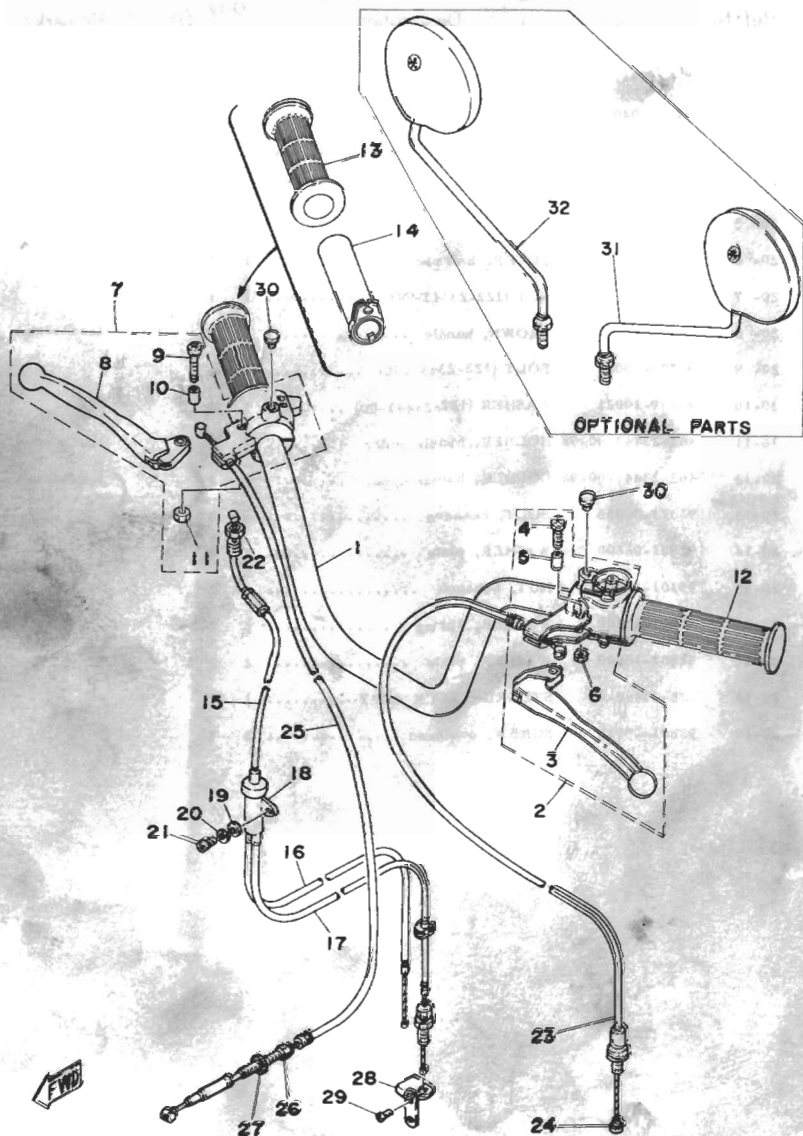


Fig. 20 STEERING



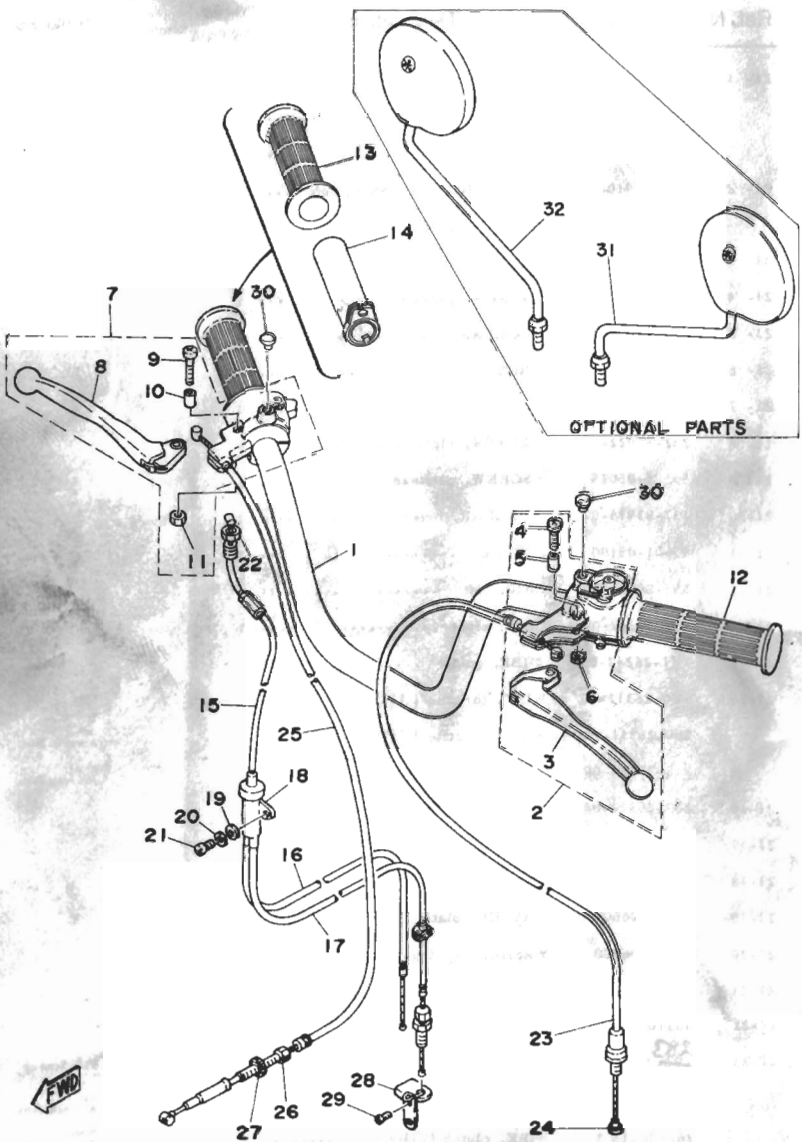
Ref. No.	Part No.	Description	Q'ty RS1 RS10X	Applicable Machine No.	Remarks
20- 1	156-23411-00	RACE, ball 1	1	1	
20- 2	93501-04011	BALL (1/4 inch)	38	38	
20- 3	156-23412-00	RACE, ball 2	1	1	
20- 4	183-23412-00	RACE, ball 2	1	1	
20- 5	183-23411-00	RACE, ball 1	1	1	
20- 6	136-23415-00	COVER, ball race	1	1	
20- 7	90179-25051	NUT (122-23543-00)	1	1	
20- 8	185-23435-00-98	CROWN, pandig	1	1	Low Gloss Black
20- 9	90105-10066	BOLT (122-23451-00)	1	1	
20-10	90207-10021	WASHER (122-23443-00)	1	1	
20-11	462-23442-00-98	HOLDER, handle under	2	2	Low Gloss Black
20-12	462-23441-00-98	HOLDER, handle upper	2	2	Low Gloss Black
20-13	97311-06035	BOLT, hexagon	4	4	
20-14	92901-06600	WASHER, plate	4	4	
20-15	95301-10600	NUT, hexagon	2	2	
20-16	92901-10100	WASHER, spring	2	2	
20-17	92901-10600	WASHER, plate	2	2	
20-18	1J5-23480-00	STEERING LOCK ASS'Y	1	1	
20-19	98601-05012	SCREW, ovalhead	2	2	

Fig. 21 HANDLE · WIRE (FS1)



Ref. No.	Part No.	Description	Qty	Applicable Machine No.	Remarks
21- 1	1Y0-26111-00	HANDLE .....	1		STD Semi up
	183-26111-20	HANDLE .....	1		Bar Alternate Parts
	283-26111-00	HANDLE .....	1		Bridge Alternate Parts
21- 2	353-82910-01	LEVER HOLDER ASS'Y, left .....	1		STD Semi up
	448-82910-21	LEVER HOLDER ASS'Y, left .....	1		Bridge Alternate Parts
		Bar Alternate Parts			
21- 3	137-83912-02-38	: LEVER, left .....	1		
21- 4	98501-05020	: SCREW, panhead .....	1		
21- 5	137-83913-01	: COLLAR, lever .....	1		
21- 6	95601-05100	: NUT U .....	1		
21- 7	109-82820-12-94	LEVER HOLDER ASS'Y, right .....	1		
21- 8	232-83922-31-38	: LEVER, right .....	1		
21- 9	98501-05025	: SCREW, panhead .....	1		
21-10	137-83913-01	: COLLAR, lever .....	1		
21-11	95601-05100	: NUT U .....	1		
21-12	353-26241-00	GRIP, left .....	1		
21-13	353-26242-00	GRIP, right .....	1		
21-14	1Y1-26243-00	TUBE, guide .....	1		
21-15	1Y0-26311-00	WIRE, throttle 1 (520mm) .....	1		STD Semi up
	260-26311-20	WIRE, throttle 1 (395mm) .....	1		Bar Alternate Parts
	212-26311-00	WIRE, throttle 1 (545mm) .....	1		Bridge Alternate Parts
21-16	207-26312-00	WIRE, throttle 2 (305mm) .....	1		
21-17	260-26321-00	WIRE, pump (350mm) .....	1		
21-18	137-26261-01	CYLINDER, wire .....	1		
21-19	92901-06600	WASHER, plate .....	1		
21-20	92901-06100	WASHER, spring .....	1		
21-21	92501-06012	SCREW, panhead .....	1		
21-22	90170-10038	NUT .....	1		
21-23	263-26335-00	WIRE, clutch (1010mm) .....	1		STD Semi up
	260-26335-20	WIRE, clutch (860mm) .....	1		Bar Alternate Parts
	260-26335-10	WIRE, clutch (1030mm) .....	1		Bridge Alternate Parts

Fig. 21 HANDLE · WIRE (FS1)



Ref. No.	Part No.	Description	Q'ty	Applicable Machine No.	Remarks
			FS1 FS1HX		

21-24	164-26363-00	END, wire .....	1		
21-25	1Y0-26341-00	WIRE, brake (1010mm) .....	1		STD Semi up
	109-26341-20	WIRE, brake (885mm) .....	1		Bar Alternate Parts
	132-26341-10	WIRE, brake (1020mm) .....	1		Bridge Alternate Parts
21-26	90123-06011	BOLT (109-26345-00) .....	1		
21-27	90179-06143	NUT (109-26344-00) .....	1		
21-28	257-13151-01	STAY .....	1		
21-29	98501-05010	SCREW, panhead .....	2		
21-30	90338-07011	PLUG (116-83931-00) .....	2		

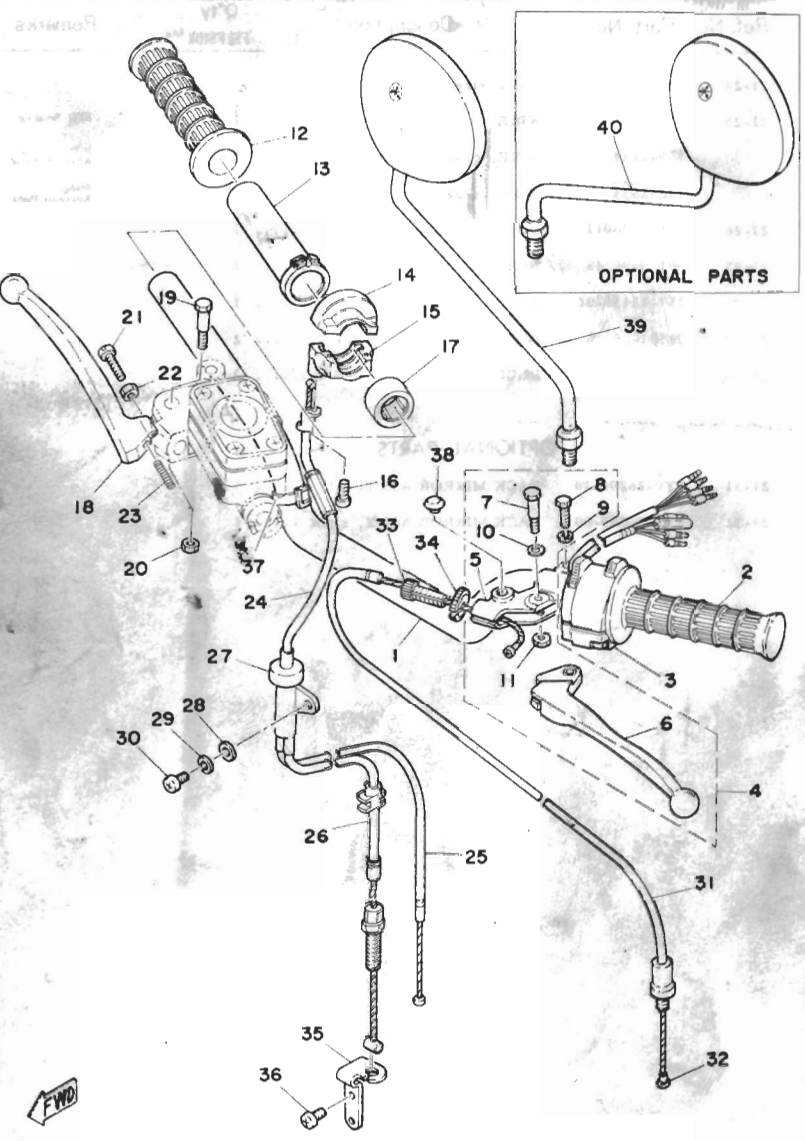
OPTIONAL PARTS

21-31	1Y0-26290-10	BACK-MIRROR ASS'Y, left .....	1		
21-32	1Y0-26290-00	BACK MIRROR ASS'Y, right .....	1		



Fig. 22 HANDLE · WIRE (FS1-DX)

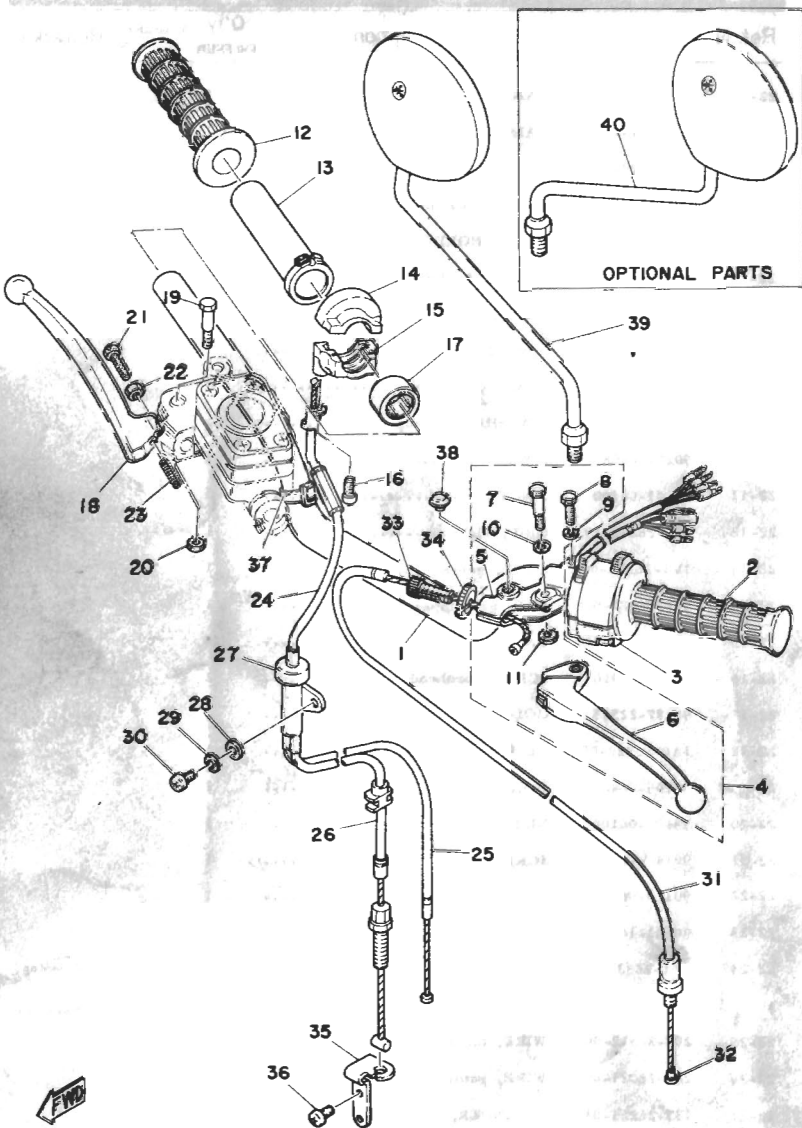
Fig. 22 HANDLE · WIRE (FS1-DX)



Ref. No.	Part No.	Description	Qty	Applicable Machine No.	Remarks
			FS1/FS1DX		
22- 1	463-26111-00	HANDLE .....	1		STD Semi up
	463-26111-21	HANDLE .....	1		Bar Alternate Parts
22- 2	235-26241-10	GRIP, left .....	1		
22- 3	393-83973-02	SWITCH, handle 3 .....	1		
22- 4	360-82910-02	LEVER HOLDER ASS'Y. left .....	1		
22- 5	341-82911-00	. HOLDER, lever left .....	1		
22- 6	214-83912-00	. LEVER, left .....	1		
22- 7	90109-06410	. BOLT .....	1		
22- 8	97301-06022	. BOLT, hexagon .....	1		
22- 9	92901-06100	. WASHER, spring .....	1		
22-10	90201-08083	. WASHER, plate .....	1		
22-11	95601-06100	. NUT U .....	1		
22-12	306-26242-10	GRIP, right .....	1		
22-13	1V1-26243-00	TUBE, guide .....	1		
22-14	307-26281-00	CAP, grip upper .....	1		
22-15	307-26282-00	CAP, grip under .....	1		
22-16	98501-05016	SCREW, panhead .....	2		
22-17	90387-22585	COLLAR (22-28, 9=15) .....	1		
22-18	1A0-83922-00	LEVER, right .....	1		
22-19	90109-06465	BOLT .....	1		
22-20	95601-06100	NUT U .....	1		
22-21	90146-06008	SCREW .....	1		
22-22	90170-06010	NUT, hexagon (306-83927-00) .....	1		
22-23	90501-10312	SPRING, compression (306-83924-00) .....	1		
22-24	1Y1-26311-00	WIRE, throttle 1 (520mm) .....	1		STD Semi up
	1Y1-26311-20	WIRE, throttle 1 (470mm) .....	1		Bar Alternate Parts
22-25	207-26312-00	WIRE, throttle 2 (305mm) .....	1		
22-26	260-26321-00	WIRE, pump (350mm) .....	1		
22-27	137-26261-01	CYLINDER, wire .....	1		

FWO

Fig. 22 HANDLE · WIRE (FS1-DX)

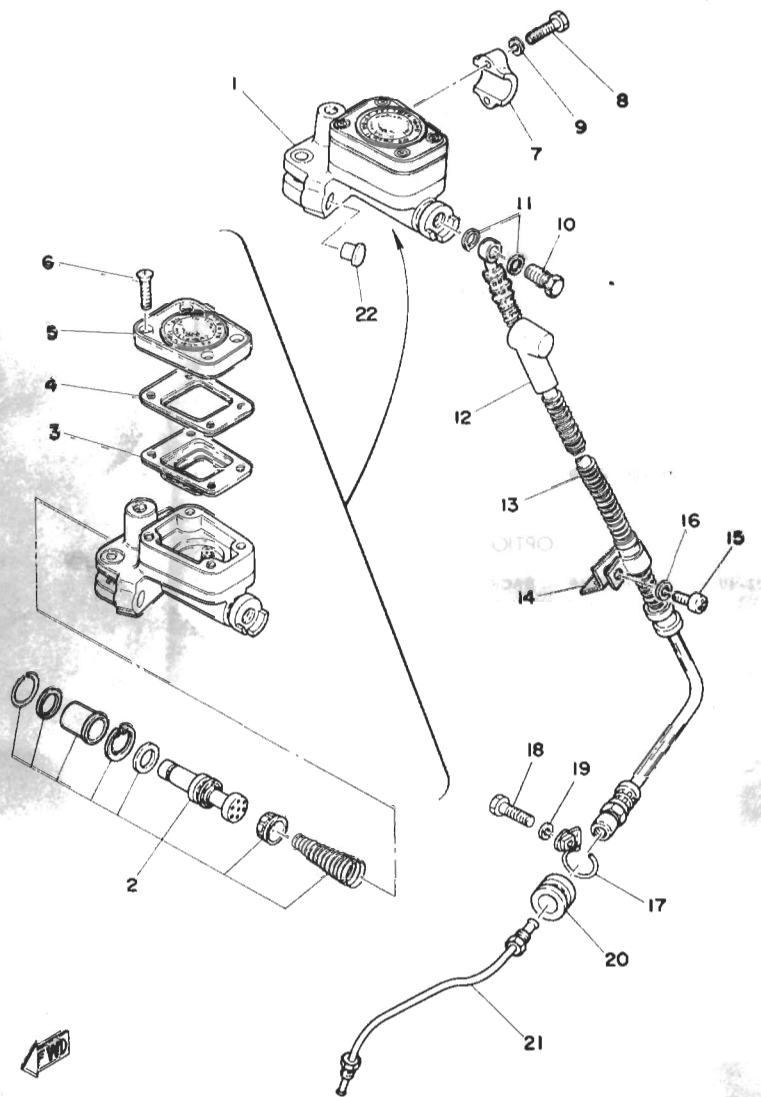


Ref. No.	Part No.	Description	Q'ty	Applicable Machine No.	Remarks
22-28	92901-06600	WASHER, plate	1		
22-29	92901-06100	WASHER, spring	1		
22-30	92501-06012	SCREW, panhead	1		
22-31	1Y1-26335-00	WIRE, clutch (1000mm)	1		STB semi up
	1Y1-26335-20	WIRE, clutch (910mm)	1		Bar Alternate Parts
22-32	164-26363-00	END, wire	1		
22-33	90123-08013	BOLT (156-26346-00)	1		
22-34	90179-08148	NUT (168-26344-00)	1		
22-35	257-13151-01	STAY	1		
22-36	98501-05010	SCREW, panhead	2		
22-37	168-83936-01	BAND, switch cord	1		
22-38	90338-09046	PLUG, blind	1		
22-39	1Y1-26290-00	BACK MIRROR ASS'Y, right	1		

OPTIONAL PARTS

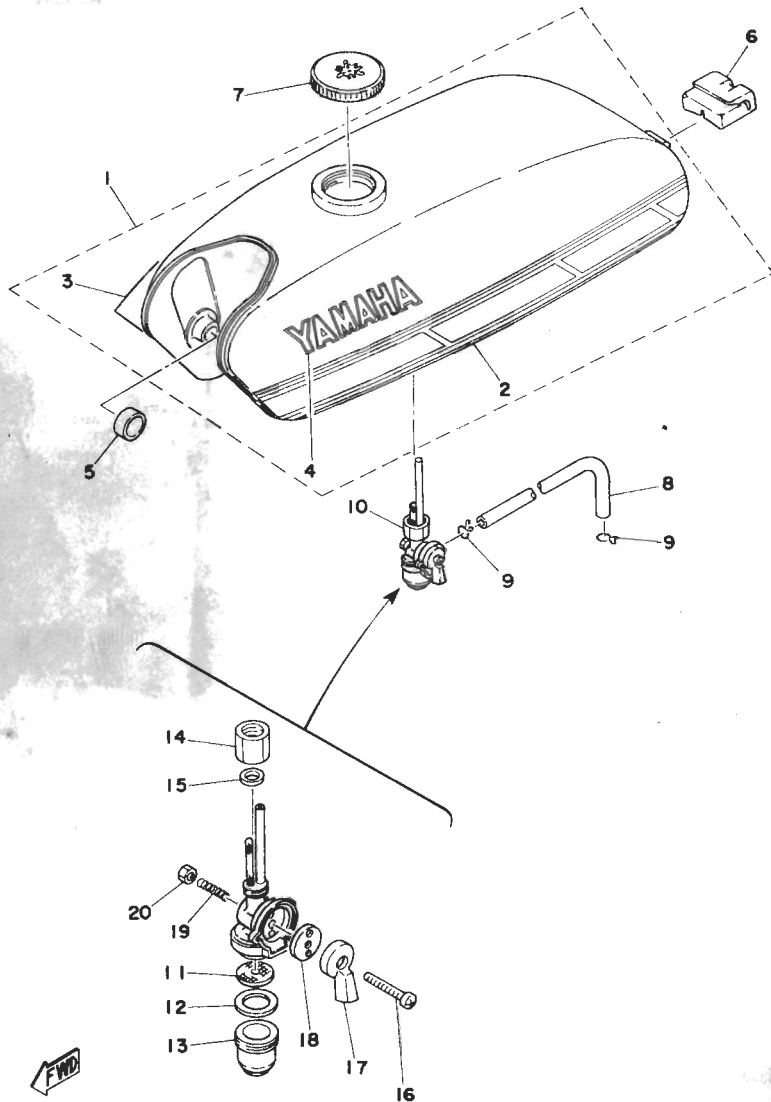
22-40	1Y1-26290-10	BACK MIRROR ASS'Y, left	1		
-------	--------------	-------------------------	---	--	--

Fig. 23 MASTER CYLINDER · BRAKE HOSE (FS1-DX)



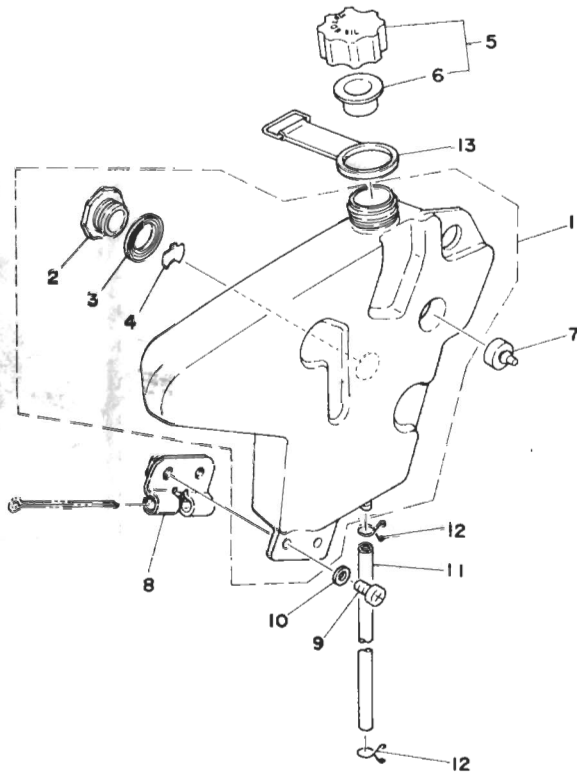
Ref. No.	Part No.	Description	Q'ty		Remarks
			FS1	FS1DX	
23- 1	1A0-25850-02	MASTER CYLINDER ASS'Y	1		ASCO
	1Y1-25850-00	MASTER CYLINDER ASS'Y	1		NISSIN
23- 2	1A0-20000-10	. CYLINDER KIT, master	1		ASCO
	1Y1-W0041-00	. CYLINDER KIT, master	1		NISSIN
23- 3	1A0-25854-01	. DIAPHRAGM, reservoir	1		ASCO
	1J3-25854-01	. DIAPHRAGM, reservoir	1		NISSIN
23- 4	1A0-25855-01	. GASKET, reservoir	1		ASCO
	1J3-25855-01	. GASKET, reservoir	1		NISSIN
23- 5	1A0-25893-01	. RESERVOIR CAP ASS'Y	1		ASCO
	1J3-25852-01	. RESERVOIR CAP ASS'Y	1		NISSIN
23- 6	1A0-25824-01	. SCREW	4		ASCO
	90151-05008	. SCREW	4		NISSIN
23- 7	1J3-25867-00	BRACKET, master	1		
23- 8	97321-06025	BOLT, hexagon	2		
23- 9	92901-06100	WASHER, spring	2		
23-10	90401-10034	BOLT, union	1		
23-11	90201-10118	WASHER, plate	2		
	360-25862-00	BOOT, master cylinder	1		STD Semi up
23-12	306-25862-00	BOOT, master cylinder	1		Bar Alternate Parts
	1K0-25872-03	HOSE, brake	1		STD Semi up
23-13	1Y1-25872-00	HOSE, brake	1		Bar Alternate Parts
	1K0-25873-01	HOLDER, brake hose	1		
23-14	92501-06012	SCREW, panhead	1		
23-15	92901-06100	WASHER, spring	1		
23-16	404-25876-00	HOLDER, brake hose 2	1		
23-17	97301-06025	BOLT, hexagon	1		
23-18	92901-06100	WASHER, spring	1		
23-19	341-25881-00	RUBBER, brake hose	1		
23-20	404-25871-01	PIPE, brake	1		
23-21	90338-12083	PLUG	1		

Fig. 24 FUEL TANK



Ref. No.	Part No.	Description	Q'ty		Applicable Machine No.	Remarks
			FSI	FSIDA		
24- 1	1J5-24110-01-07	FUEL TANK COMP. ....	1	1		Crystal Silver
	1J5-24110-01-08	FUEL TANK COMP. ....	1	1		Chrome Plated
	1J5-24110-01-X0	FUEL TANK COMP. ....	1	1		Chappy Red
	1J5-24110-01-X1	FUEL TANK COMP. ....	1	1		New Portuguese Orange
	1J5-24110-01-X2	FUEL TANK COMP. ....	1	1		Space Blue
24- 2	1Y1-24244-00	. GRAPHIC, fuel tank left .....	1	1		
24- 3	1Y1-24245-00	. GRAPHIC, fuel tank right .....	1	1		
24- 4	1A0-24161-00	. EMBLEM, fuel tank .....	2	2		
24- 5	122-24181-00	DAMPER, locating 1 .....	2	2		
24- 6	467-24184-00	DAMPER, locating .....	1	1		
24- 7	122-24610-01	CAP ASS'Y .....	1	1		
24- 8	90445-09353	HOSE (5-520) .....	1	1		
24- 9	90467-08003	CLIP (101-24356-00) .....	2	2		
24-10	367-24500-04	FUEL COCK ASS'Y .....	1	1		
24-11	355-24515-00	. NET, filter .....	1	1		
24-12	102-24522-01	. GASKET, filter .....	1	1		
24-13	122-24521-00	. CUP, filter .....	1	1		
24-14	603-24531-01	. NUT .....	1	1		
24-15	122-24532-00	. GASKET .....	1	1		
24-16	98501-05030	. SCREW, panhead .....	1	1		
24-17	355-24524-01	. LEVER, cock .....	1	1		
24-18	355-24523-00	. VALVE .....	1	1		
24-19	355-24518-01	. SPRING, lever .....	1	1		
24-20	95301-05600	. NUT, hexagon .....	1	1		

Fig. 25 OIL TANK

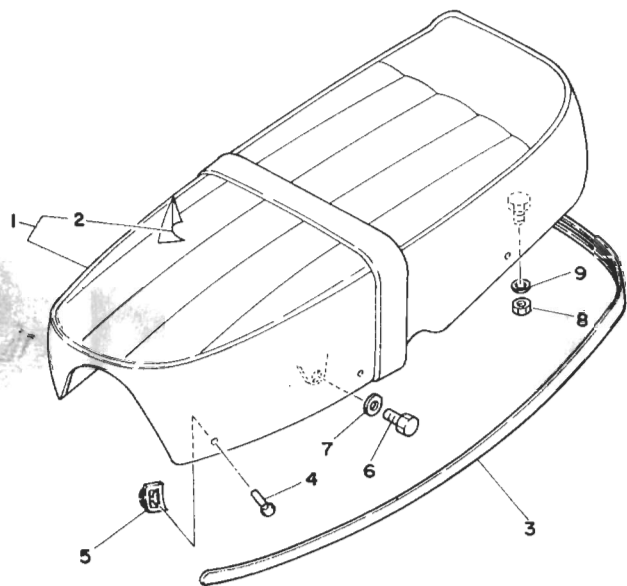


Ref. No.	Part No.	Description	Q'ty		Remarks
			FSI	FSIDX	
25- 1	1Y1-21750-00	OIL TANK ASS'Y .....	1	1	
25- 2	1Y1-21764-00	. LENS, level gauge .....	1	1	
25- 3	1Y1-21763-00	. GASKET, level gauge .....	1	1	
25- 4	1Y1-2176A-00	. REFLECTOR, level gauge .....	1	1	
25- 5	1Y1-21770-00	OIL TANK CAP ASS'Y .....	1	1	
25- 6	1Y1-21772-00	. GASKET, cap .....	1	1	
25- 7	164-21778-00	DAMPER, locating .....	2	2	
25- 8	1Y1-21796-00	HINGE .....	1	1	
25- 9	92501-06012	SCREW, panhead .....	2	2	
25-10	92901-06600	WASHER, plate .....	2	2	
25-11	126-24319-01	HOSE, oil .....	1	1	
25-12	90467-08003	CLIP (101-24356-00) .....	2	2	
25-13	1Y1-21776-00	BAND, tank fitting .....	1	1	





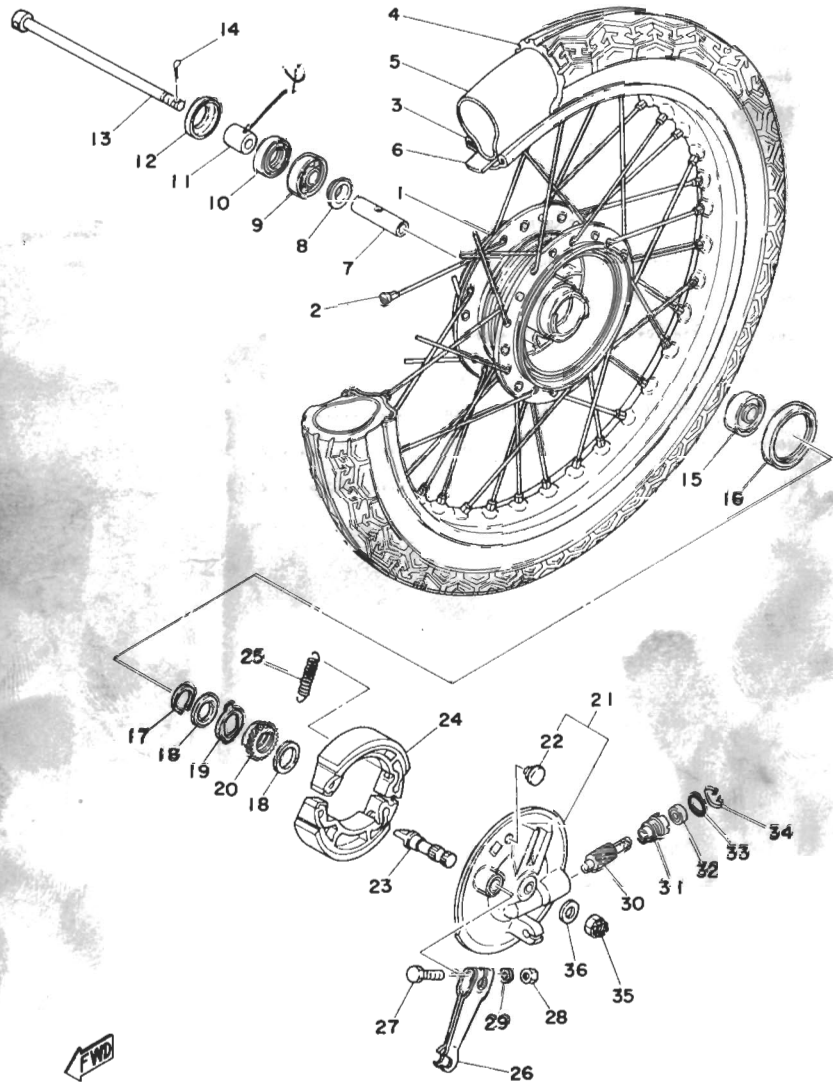
Fig. 26 SEAT



Ref. No.	Parts No.	Description	Qty ESL/NDM	Applicable Machine No.	Remarks
26- 1	1Y1-24730-90	DOUBLE SEAT ASS'Y .....	1	1	
26- 2	260-24731-00	COVER, double seat .....	1	1	
26- 3	1Y1-24785-00=20	MOLD, double seat .....	1	1	Crystal Silver
	1Y1-24785-10	MOLD, double seat .....	1	1	(Chrome Plated)
	1Y1-24785-00=E1	MOLD, double seat .....	1	1	Happy Red
	1Y1-24785-00-U2	MOLD, double seat .....	1	1	New Portuguese Orange
	1Y1-24785-00=J5	MOLD, double seat .....	1	1	Space Blue
26- 4	1L9-24789-00	RIVET .....	6	6	
26- 5	90183-04012	NUT, speed .....	6	6	
26- 6	97301-08018	BOLT, hexagon .....	2	2	
26- 7	92901-08200	WASHER, plain .....	2	2	
26- 8	95301-08600	NUT, hexagon .....	2	2	
26- 9	92901-08600	WASHER, plate .....	2	2	

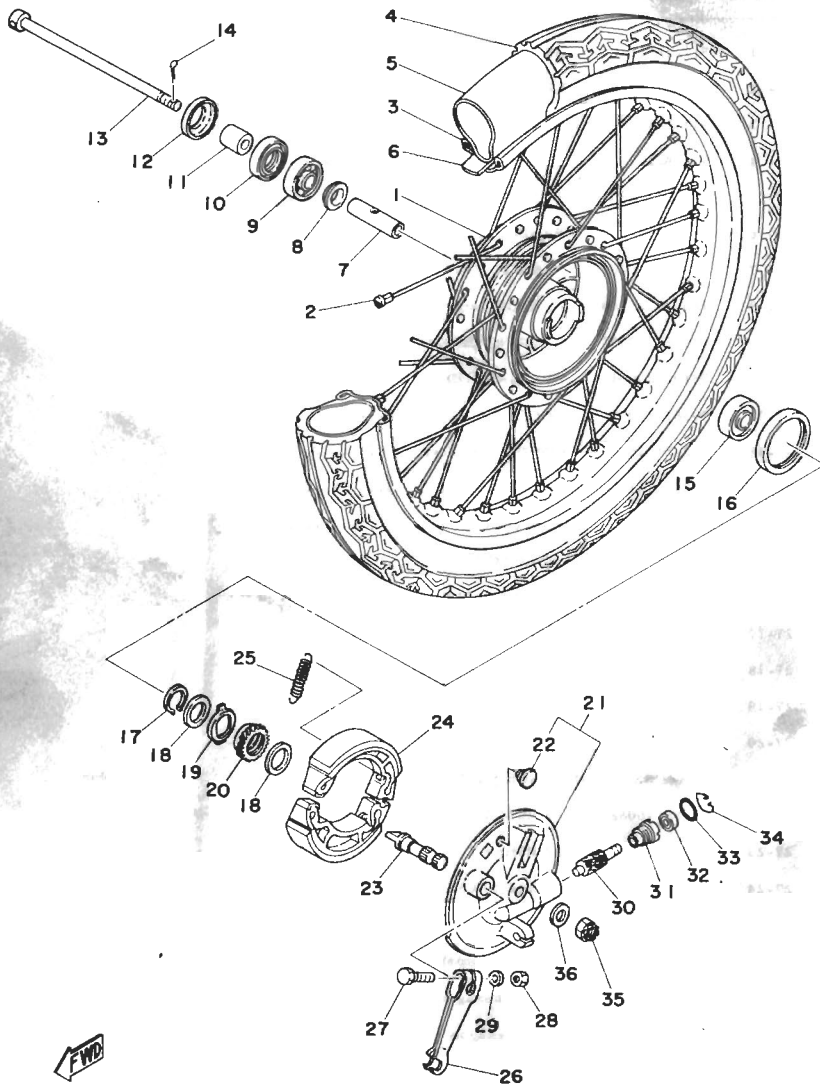
FWD

Fig. 27 FRONT WHEEL (FS1)



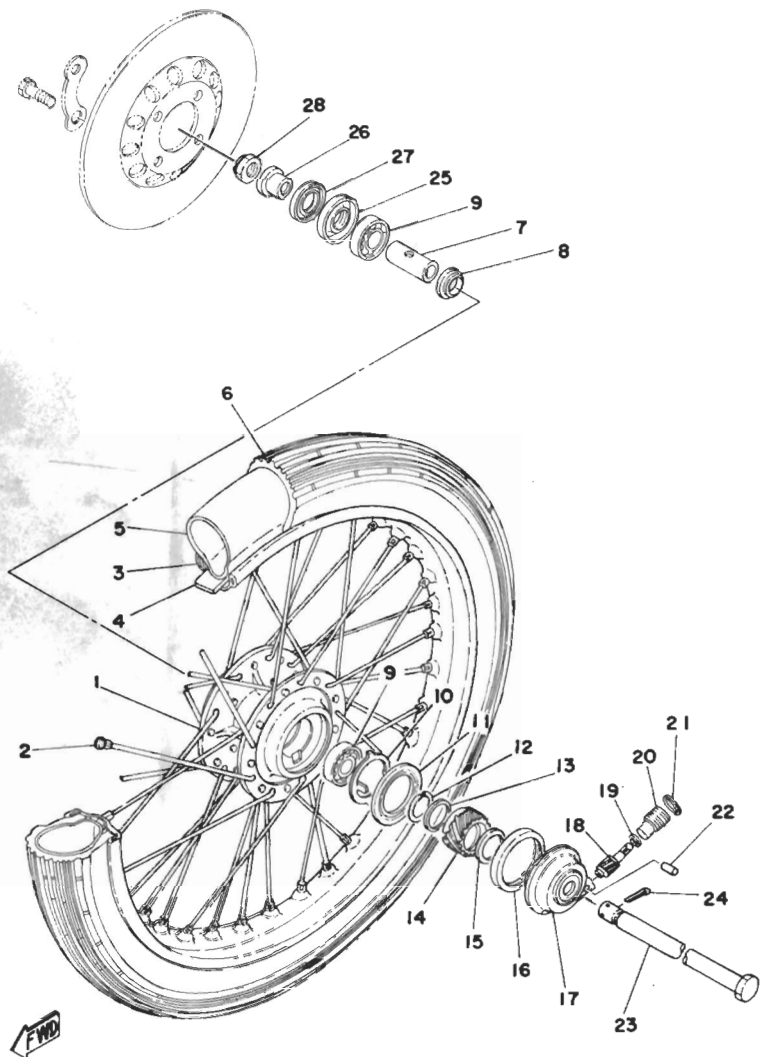
Ref. No.	Part No.	Description	Qty	Applicable Machine No.	Remarks
27-1	517-25111-00=35	HUB, front	1		Silver
27-2	109-25104-00	SPOKE SET	18		
27-3	94412-17002	RIM (1.20A-17)	1		
27-4	94126-17259	TIRE, front (2.56-17-4PR)	1		
27-5	94225-17005	TUBE (2.50-17)	1		
27-6	94330-17023	BAND, rim (2.50-17)	1		
27-7	195-25117-00	SPACER, bearing	1		
27-8	195-25115-00	FLANGE, spacer	1		
27-9	93306-30003	BEARING (B6300Z)	1		
27-10	93106-20001	OIL SEAL (SD-20-33-7)	1		
27-11	90387-10277	COLLAR (10-20-20)	1		
27-12	322-25118-00	COVER, hub dust	1		
27-13	353-25181-03	SHAFT, wheel	1		
27-14	91401-20020	PIN, cotter	1		
27-15	93306-30003	BEARING (B6300Z)	1		
27-16	93105-47007	OIL SEAL (SDD-47-58-7)	1		
27-17	93410-20009	CIRCLIP (S-20)	1		
27-18	90201-20269	WASHER, plate (183-25147-00)	2		
27-19	183-25149-00	CLUTCH, meter	1		
27-20	296-25135-00	GEAR, drive (27T)	1		
27-21	1K8-25120-00-35	BRAKE SHOE PLATE ASSY	1		Silver
27-22	90480-10068	GROMMET	1		
27-23	538-25351-01	CAMSHAFT	1		
27-24	296-25330-00	BRAKE SHOE COMB.	2		
27-25	90506-16034	SPRING, tension (10Z-25333-00)	2		
27-26	538-25155-00	LEVER, camshaft	1		
27-27	90101-06278	BOLT, hexagon	1		
27-28	95301-06600	NUT, hexagon	1		
27-29	90201-07076	WASHER, plate (183-25146-00)	1		

Fig. 27 FRONT WHEEL (FS1)



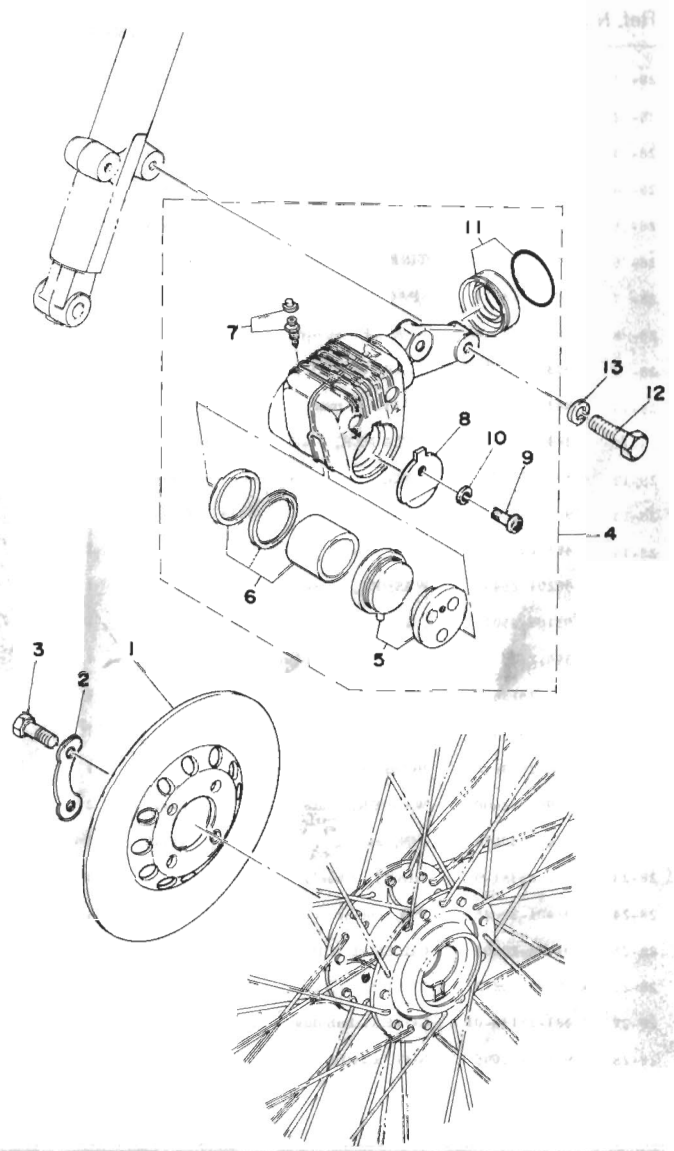
Ref. No.	Part No.	Description	Q'ty		Remarks
			FS1	FS1DX	
27-30	296-25138-00	GEAR, meter (11T) .....	1		
27-31	109-25136-00	BUSHING .....	1		
27-32	93104-07003	OIL SEAL (SO-7-14-4) .....	1		
27-33	93210-14104	O-RING (2.4-13.8) .....	1		
27-34	102-25137-00	RING, stop .....	1		
27-35	90171-10004	NUT, castle (353-25182-00) .....	1		
27-36	90201-10123	WASHER, plate .....	1		

Fig. 28 FRONT WHEEL (FS1-DX)



Ref. No.	Part No.	Description	Q'ty FS1/FS1DX	Applicable Machine No.	Remarks
28- 1	390-25111-00	HUB, front .....	1		
28- 2	481-25104-00	SPOKE SET .....	18		
28- 3	94414-17090	RIM, front (1.40-17) .....	1		
28- 4	94330-17023	BAND, rim (2.50-17) .....	1		
28- 5	94225-17005	TUBE, front (2.50-17) .....	1		
28- 6	94125-17259	TIRE, front (2.50-17-4PR) .....	1		
28- 7	90560-12138	SPACER, bearing (183-25117-00)..	1		
28- 8	109-25315-00	FLANGE, spacer .....	1		
28- 9	93306-30103	BEARING (B6301Z) .....	2		
28-10	341-25149-00	CLUTCH, meter .....	1		
28-11	341-25846-00	RETAINER, clutch meter .....	1		
28-12	341-25137-00	RING, stop .....	1		
28-13	90201-25286	WASHER, plate (341-25147-00) ...	1		
28-14	481-25135-00	GEAR, drive (27T) .....	1		
28-15	90201-25490	WASHER, plate (152-17226-00) ...	1		
28-16	93105-45017	OIL SEAL (SDD-45-56-6) .....	1		
28-17	390-25191-01	HOUSING, gear unit .....	1		
28-18	481-25138-00	GEAR, meter (11T) .....	1		
28-19	102-18416-00	WASHER (6.2-9.5-0.8) .....	1		
28-20	306-25136-00	BUSHING .....	1		
28-21	92901-12600	WASHER, plate .....	2		
28-22	91609-20014	PIN, spring .....	1		
28-23	367-25381-00	SHAFT, wheel .....	1		
28-24	91401-30025	PIN, cotter .....	1		
28-25	93406-20002	OIL SEAL (DD20-37-8) .....	1		
28-26	90387-12272	COLLAR .....	1		
28-27	481-25118-01	COVER, hub dust .....	1		
28-28	90171-12005	NUT, castle .....	1		

Fig. 29 DISC BRAKE · CALIPER (FS1-DX)

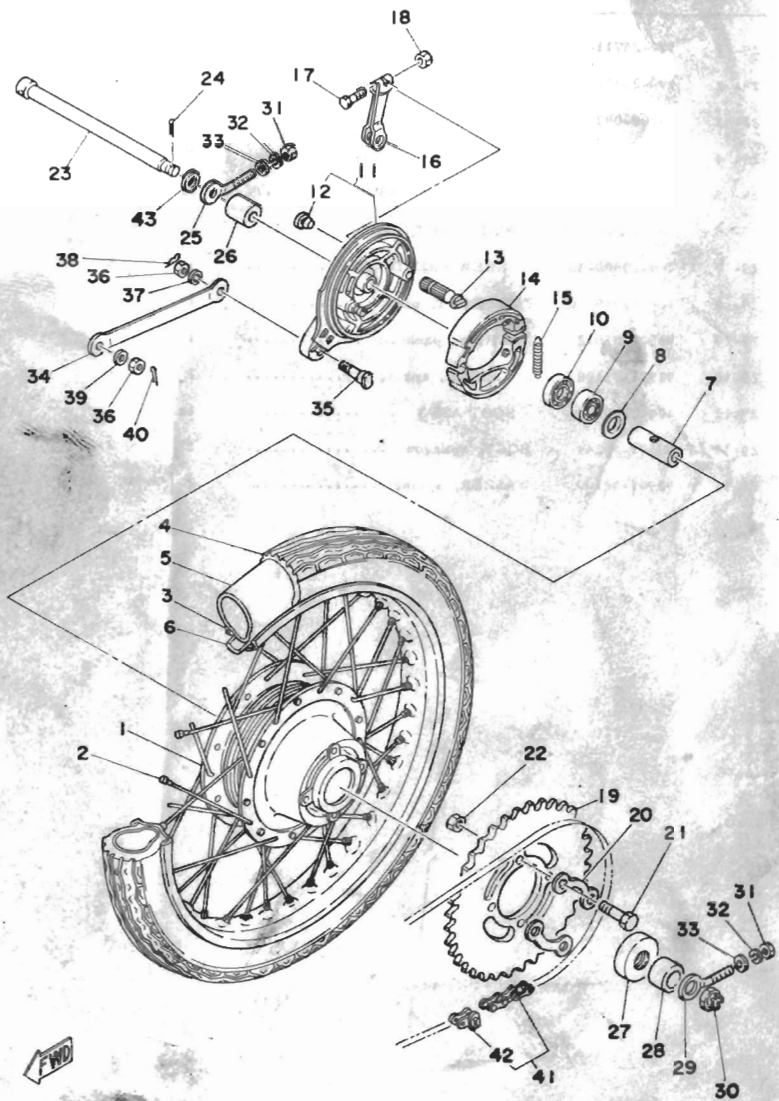


Ref. No.	Part No.	Description	Q'ty	Applicable	Remarks
			FS1	FS1DX	
29- 1	390-25711-00	DISK, brake	1		
29- 2	390-25412-00	WASHER, lock	2		
29- 3	90109-08367	BOLT	4		
29- 4	526-25810-00	CALIPER ASS'Y	1		
29- 5	464-20000-11	PAD LINING ASS'Y	1s		
29- 6	404-W0057-00	PISTON SET, caliper	1s		
29- 7	404-20000-30	SCREW BREED ASS'Y	1s		
29- 8	404-25919-00	SUPPORT, pad	1		
29- 9	98501-05012	SCREW, panhead	1		
29-10	92901-05100	WASHER, spring	1		
29-11	404-20000-41	BOOT ASS'Y	1s		
29-12	90101-08244	BOLT, hexagon	2		
29-13	92901-08100	WASHER, spring	2		



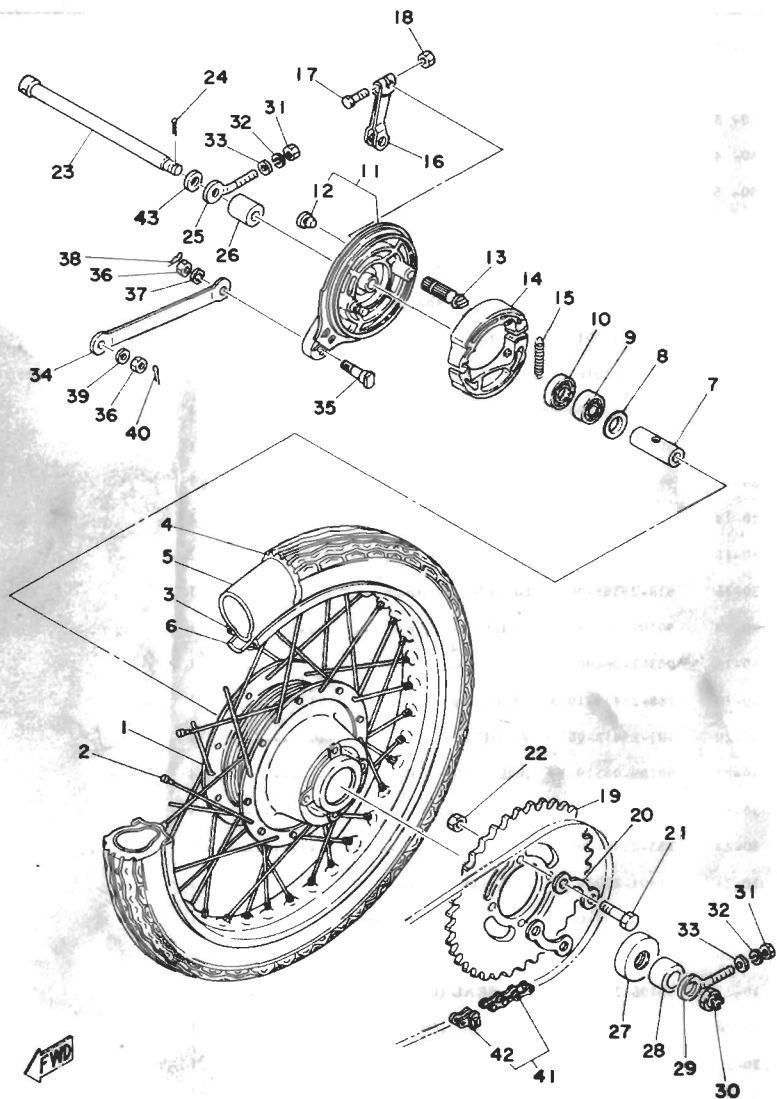
FWD

Fig. 30 REAR WHEEL



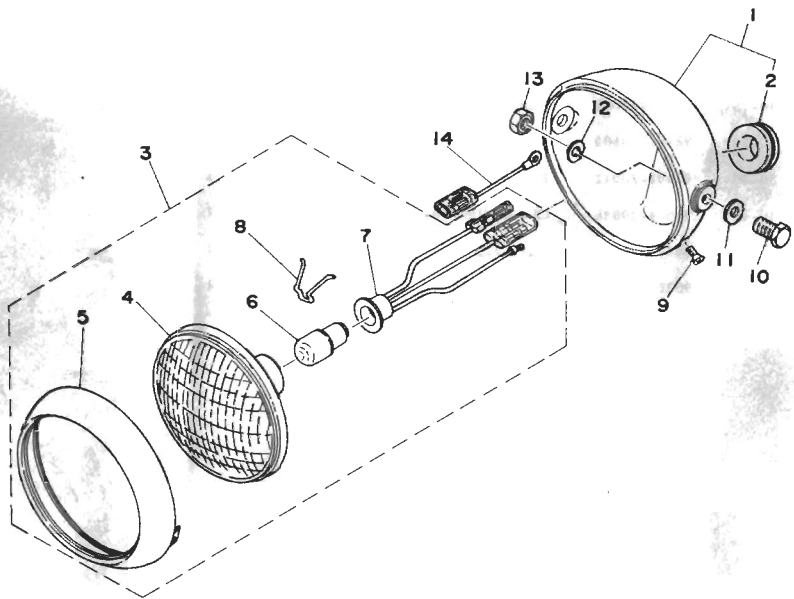
Ref. No.	Part No.	Description	Qty	Applicable Machine No.	Remarks
30-1	462-25311-01-35	HUB, rear	1	1	Silver
30-2	296-25304-00	SPOKE SET	1s	1s	
30-3	94414-17003	RIM (1.40-17)	1	1	
30-4	94125-17259	TIRE, rear (2.50-17-4PR)	1	1	
30-5	94225-17005	TUBE (2.50-17)	1	1	
30-6	94330-17023	BAND, rim (2.50-17)	1	1	
30-7	90560-12170	SPACER	1	1	
30-8	102-25315-00	FLANGE, spacer	1	1	
30-9	93306-30101	BEARING (B6301)	2	2	
30-10	93104-21016	OIL SEAL (SO-21-37-7)	1	1	
30-11	355-25320-00-35	BRAKE SHOE PLATE ASS'Y	1	1	Silver
30-12	90480-10068	GROMMET	1	1	
30-13	538-25351-01	CAMSHAFT	1	1	
30-14	296-25330-00	BRAKE SHOE COMB.	2	2	
30-15	90506-16034	SPRING, tension (102-25333-00)	2	2	
30-16	538-25355-00	LEVER, camshaft	1	1	
30-17	90101-06278	BOLT, hexagon	1	1	
30-18	95301-06600	NUT, hexagon	1	1	
30-19	288-25439-i0-33	GEAR, sprocket wheel (39T)	1	1	
30-20	101-25412-00	WASHER, lock	2	2	
30-21	90109-08319	BOLT (109-25411-00)	4	4	
30-22	90170-08158	NUT, hexagon	4	4	
30-23	353-25381-00	SHAFT, wheel	1	1	
30-24	91401-20020	PIN, cotter	1	1	
30-25	102-25389-00	PULLER, chain right	1	1	
30-26	90387-12412	COLLAR (102-25383-00)	1	1	
30-27	93106-20002	OIL SEAL (DD-20-37-8)	1	1	
30-28	90387-12096	COLLAR (109-25377-01)	1	1	
30-29	100-25388-00	PULLER, chain left	1	1	

Fig. 30 REAR WHEEL



Ref. No.	Part No.	Description	Q'ty		Remarks
			FSI	FS1DX	
30-30	90171-10004	NUT, castle (353-25182-00) .....	1	1	
30-31	95301-06600	NUT, hexagon .....	2	2	
30-32	92901-06100	WASHER, spring .....	2	2	
30-33	92901-06600	WASHER, plate .....	2	2	
30-34	102-25371-00	BAR, tension .....	1	1	
30-35	90109-08183	BOLT (102-25373-00) .....	1	1	
30-36	95301-08700	NUT, hexagon .....	2	2	
30-37	92901-08100	WASHER, spring .....	1	1	
30-38	90468-12007	CLIP (102-25375-00) .....	1	1	
30-39	92901-08600	WASHER, plate .....	1	1	
30-40	91401-20012	PIN, cotter .....	1	1	
30-41	94504-20096	CHAIN (DK420-96L) .....	1	1	
30-42	94604-20001	JOINT, chain .....	1	1	
30-43	90201-12174	WASHER, plate .....	1	1	

Fig. 31 HEAD LAMP

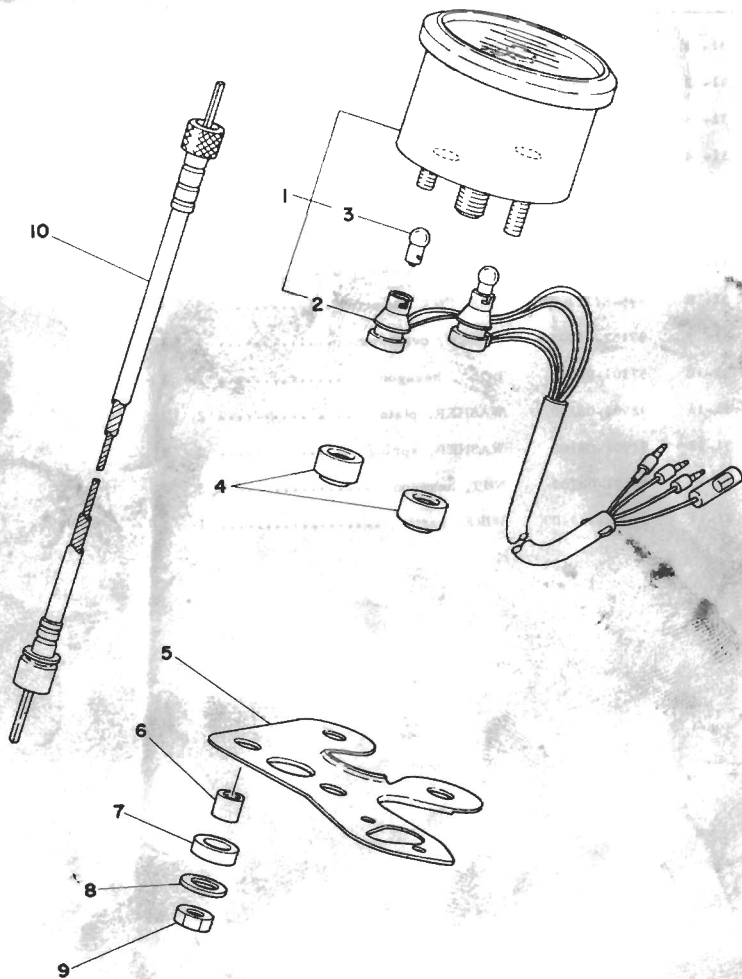


Ref. No.	Part No.	Description	Q'ty	Applicable Machine No.	Remarks
			FSI	SDX	
31- 1	241-84330-00-33	HEAD LAMP BODY ASS'Y	1	1	Yamaha Black
31- 2	150-84153-00	. GROMMET	2	2	
31- 3	394-84110-30	HEAD LAMP UNIT ASS'Y	1	1	
31- 4	127-84120-30	. LENS ASS'Y	1	1	
31- 5	195-84315-01	. RIM, head lamp	1	1	
31- 6	296-84114-30	. BULB, head lamp (6V-18/18W)	1	1	
31- 7	241-84312-00	. SOCKET CORD ASS'Y	1	1	
31- 8	195-84324-00	. SPRING, reflector set	3	3	
31- 9	90152-05005	SCREW, ovalhead	1	1	
31-10	97301-08018	BOLT, hexagon	2	2	
31-11	92901-08200	WASHER, plain	2	2	
31-12	92901-08100	WASHER, spring	2	2	
31-13	95301-08700	NUT, hexagon	2	2	
31-14	393-84313-00	WIRE, earth	1	1	





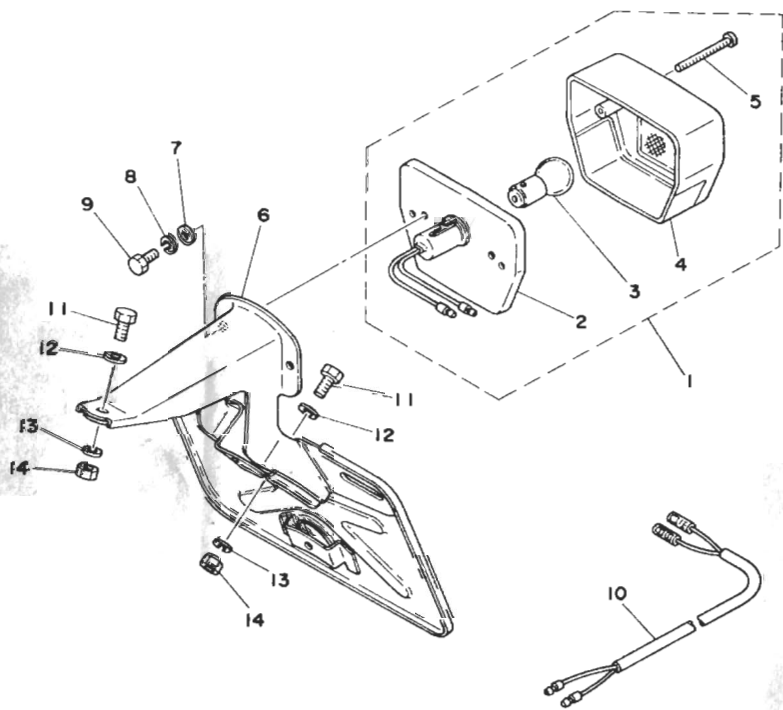
Fig. 32 SPEEDOMETER



FWD

Ref. No.	Part No.	Description	Q'ty		Remarks
			FSI	FSIX	
32- 1	582-83510-30	SPEEDOMETER ASS'Y .....	1	1	Mile/h
32- 2	552-83520-00	. SOCKET CORD ASS'Y .....	1	1	
32- 3	122-83516-10	. BULB (6V-3W) .....	2	2	
32- 4	1M3-83513-00	DAMPER 1 .....	2	2	
32- 5	1U0-83519-00-98	BRACKET, speedometer .....	1	1	Low Gloss Black
32- 6	355-83522-00	COLLAR .....	2	2	
32- 7	355-83526-00	DAMPER 2 .....	2	2	
32- 8	355-83524-00	WASHER, special .....	2	2	
32- 9	95301-06600	NU T, hexagon .....	2	2	
32-10	260-83550-00	SPEEDOMETER CABLE ASS'Y ...	1		
	481-83550-00	SPEEDOMETER CABLE ASS'Y ...	1		

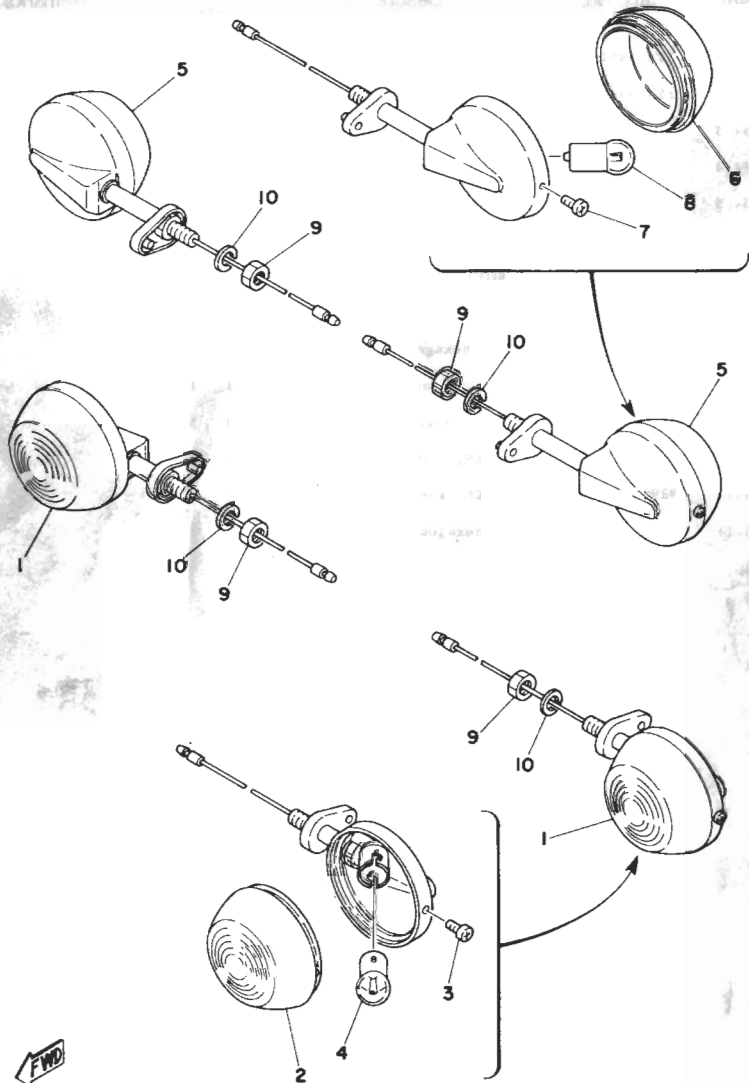
Fig. 33 TAIL LAMP



Ref. No.	Part No.	Description	Qty	Applicable Machine No.	Remarks
33- 1	1Y1-84510-30	TAIL LAMP UNIT ASS'Y	1	1	
33- 2	1Y1-84511-30	BASE, tail lamp	1	1	
33- 3		BULB, tail lamp (6V-21/5W)	1	1	
33- 4	1Y1-84524-30	LENS, tail lamp	1	1	
33- 5	98511-03045	SCREW, panhead	2	2	
33- 6	1Y1-84551-30-35	BRACKET, license	1	1	Silver
33- 7	92901-05600	WASHER, plate	2	2	
33- 8	92901-05100	WASHER, spring	2	2	
33- 9	97301-05010	BOLT, hexagon	2	2	
33-10	1X1-84517-00	CORD, tail lamp	1	1	
33-11	97301-06012	BOLT, hexagon	3	3	
33-12	92901-06600	WASHER, plate	3	3	
33-13	92901-06100	WASHER, spring	3	3	
33-14	95301-06600	NUT, hexagon	3	3	

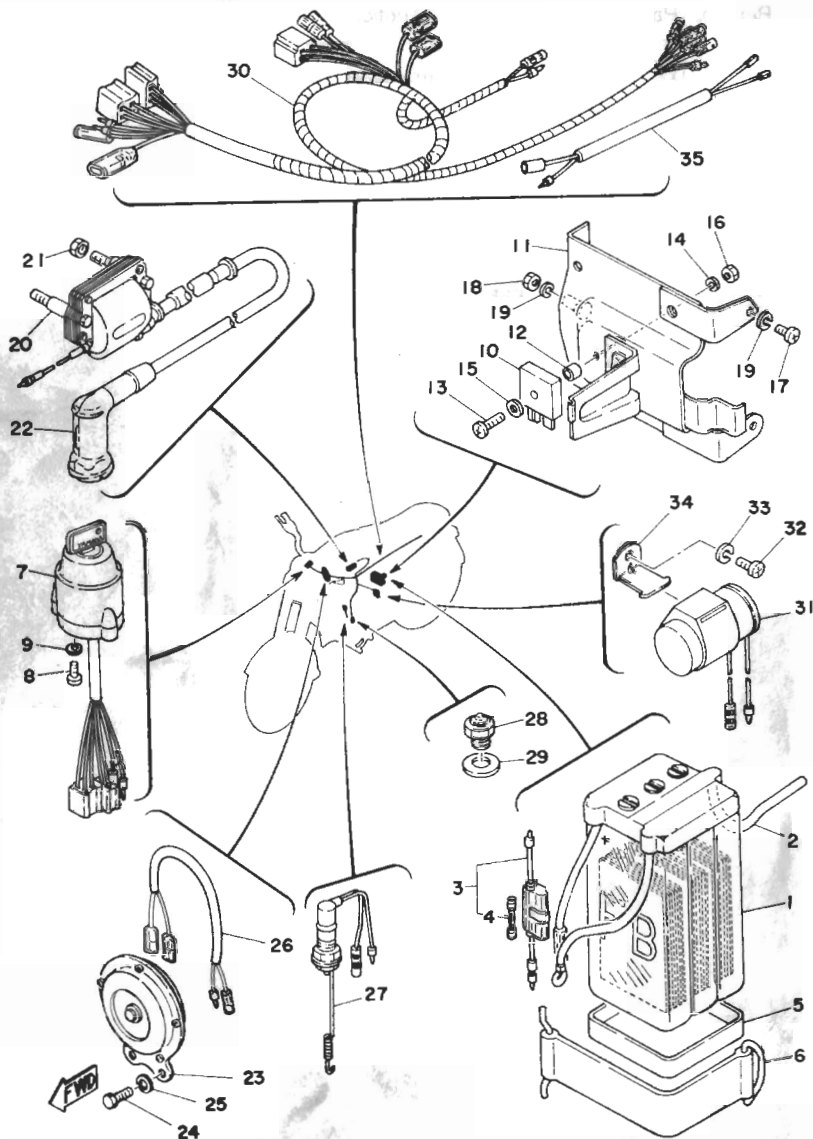
FWD

Fig. 34 FLASHER LAMP



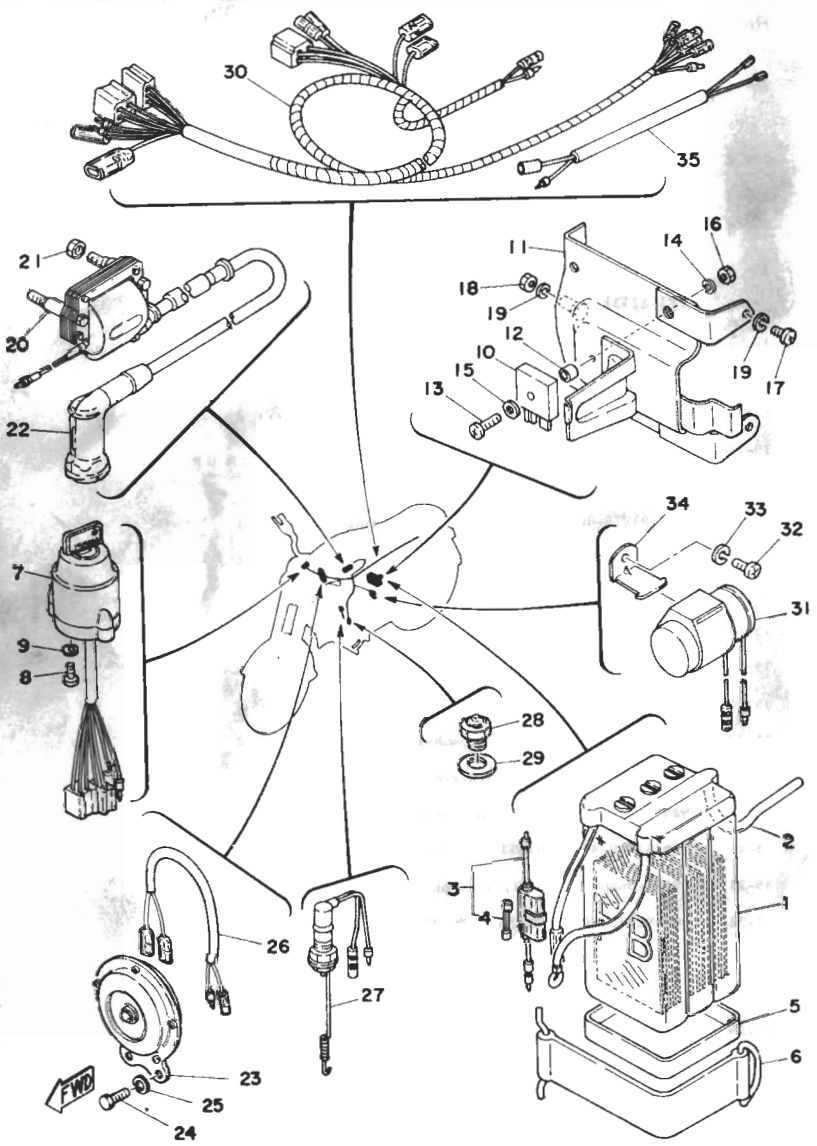
Ref. No.	Part No.	Description	Qty	Applicable Machine No.	Remarks
34-1	1Y1-83310-N0-93	FRONT FLASHER LAMP ASS'Y	2	2	
34-2	1Y1-83312-00	LENS, flasher	2	2	
34-3	98501-03006	SCREW, panhead	2	2	
34-4	152-83311-10	BULB, flasher (6V-10W)	2	2	
34-5	1Y1-83330-N0-93	REAR FLASHER LAMP ASS'Y	2	2	
34-6	1Y1-83312-00	LENS, flasher	2	2	
34-7	98501-03006	SCREW, panhead	2	2	
34-8	152-83311-10	BULB, flasher (6V-10W)	2	2	
34-9	95301-08700	NUT, hexagon	4	4	
34-10	92901-08100	WASHER, spring	4	4	

Fig. 35 ELECTRICAL



Ref. No.	Part No.	Description	Q'ty	Applicable Machine No.	Remarks
				FS1FS1DX	
35- 1	104-82110-10	BATTERY ASS'Y (6N4A-4D) ....	} UR UR 1 1		GS
	104-82110-21	BATTERY ASS'Y (6N4A-4D) ....			FULUKAWA
35- 2	90445-08171	HOSE (123-82112-00 5-375) .....	1	1	
35- 3	116-82150-00	FUSE HOLDER ASS'Y .....	1	1	
35- 4	116-82151-00	FUSE (6V-10A) .....	2	2	
35- 5	104-82122-00	SEAT, battery .....	1	1	
35- 6	1Y1-82131-00	BAND, battery .....	1	1	
35- 7	1J5-82508-20	MAIN SWITCH ASS'Y .....	1	1	
35- 8	98501-05012	SCREW, panhead .....	2	2	
35- 9	92901-05100	WASHER, spring .....	2	2	
35-10	353-81970-50	RECTIFIER ASS'Y .....	} UR UR 1 1		
	353-81970-63	RECTIFIER ASS'Y .....			
35-11	1Y1-81975-00	PLATE, rectifier fitting .....	1	1	
35-12	355-81973-00	COLLAR, rectifier (5.3-9-6.5) ...	1	1	
35-13	98501-05025	SCREW, panhead .....	1	1	
35-14	92901-05100	WASHER, spring .....	1	1	
35-15	92901-05200	WASHER, plain .....	1	1	
35-16	95301-05600	NUT, hexagon .....	1	1	
35-17	92501-06012	SCREW, panhead .....	2	2	
35-18	95301-06600	NUT, hexagon .....	1	1	
35-19	92901-06100	WASHER, spring .....	3	3	
35-20	355-82310-40	IGNITION COIL ASS'Y .....	1	1	
35-21	95301-06600	NUT, hexagon .....	2	2	
35-22	808-82370-10	PLUG CAP ASS'Y .....	1	1	
35-23	260-83371-12	HORN .....	1	1	
35-24	97301-06010	BOLT, hexagon .....	2	2	
35-25	92901-06100	WASHER, spring .....	2	2	
35-26	260-83373-00	LEAD, horn .....	1	1	
35-27	122-82530-00	STOP SWITCH ASS'Y .....	1	1	

Fig. 35 ELECTRICAL



Ref. No.	Part No.	Description	Qty		Remarks
			FSI	FS1DX	
35-28	136-82540-00	NEUTRAL SWITCH ASS'Y	1	1	
35-29	90430-11034	GASKET	1	1	
35-30	101-82590-20	WIRE HARNESS ASS'Y	1	1	
35-31	1K1-83350-11	FLASHER RELAY ASS'Y	1	1	
35-32	92501-06012	SCREW, panhead	1	1	
35-33	92901-06100	WASHER, spring	1	1	
35-34	474-83352-00	BRACKET, flasher relay	1	1	
35-35	471-82531-00	WIRE, lead	1	1	

# REPAIR KIT



Fig. 36 REPAIR KIT

Ref. No.	Part No.	Description	Q'ty		Applicable Machine No.	Remarks	
			PSI	FSBX			
36- 1	260-11630-00	PISTON ASS'Y (STD)	1s	1s			
	260-11630-10	PISTON ASS'Y (1st O.S)	1s	1s			
	260-11630-20	PISTON ASS'Y (2nd O.S)	1s	1s			
	260-11630-30	PISTON ASS'Y (3rd O.S)	1s	1s			
	260-11630-40	PISTON ASS'Y (4th O.S)	1s	1s			
36- 2	109-11631-02-96	PISTON (39.96mm STD)	ULR	ULR	}	Ref. No. 38	
	109-11631-02-98	PISTON (39.98mm STD)					1
	109-11635-02	PISTON (40.25mm 1st O.S)	1	1			
	109-11636-02	PISTON (40.50mm 2nd O.S)	1	1			
	109-11637-02	PISTON (40.75mm 3rd O.S)	1	1			
	109-11638-02	PISTON (41.00mm 4th O.S)	1	1			
36- 3	260-11601-00	PISTON RING SET (STD)	1s	1s	}	3-11	
	260-11601-10	PISTON RING SET (1st O.S)	1s	1s			
	260-11601-20	PISTON RING SET (2nd O.S)	1s	1s			
	260-11601-30	PISTON RING SET (3rd O.S)	1s	1s			
	260-11601-40	PISTON RING SET (4th O.S)	1s	1s			
36- 4	102-11633-02	PIN, piston	1	1		39	
36- 5	93450-1302Z	CIRCLIP	2	2		3-10	
36- 6	517-11650-00	CONNECTING ROD ASS'Y	1s	1s			
36- 7	517-11651-00	ROD, connecting	1	1		3-4	
36- 8	257-11681-00	PIN, crank	1	1		3-6	
36- 9	93310-41810	BEARING, big end	1	1		3-5	
36-10	93310-11268	BEARING, small end	1	1		3-7	
36-11	1Y0W0001-00	GASKET KIT	1s	1s			
36-12	109-11351-00	GASKET, cylinder	1	1		1-11	
36-13	517-11181-00	GASKET, cylinder head	1	1		1-13	
36-14	90430-12038	GASKET (132-15353-00)	1	1		1-18	
36-15	93210-12014	O-RING (2.62-10.77)	1	1		1-23	
36-16	93210-23029	O-RING (3.53-21.82)	1	1		1-24	

Ref. No.	Part No.	Description	Q'ty		Applicable Machine No.	Remarks
			PSI	FSBX		
36-17	257-15451-00	GASKET, crankcase cover	1	1		Ref. No. 2-12
36-18	257-15463-00	GASKET, carburetor cover	1	1		2-19
36-19	260-14184-00	GASKET, float chamber	1	1		10-5
36-20	132-14613-00	GASKET, exhaust	1	1		11-4
36-21	1J5-14714-00	GASKET, muffler joint	1	1		11-3
36-22	126-13116-00	GASKET, pump case	1	1		12-1
36-23	90430-04004	GASKET (137-13187-00)	1	1		12-18
36-24	90430-06011	GASKET (137-13167-00)	2	2		12-26
36-25	1Y0W0003-00	OIL SEAL KIT	1s	1s		
36-26	93103-28012	OIL SEAL (SW-28-47-8)	1	1		1-25
36-27	93102-20009	OIL SEAL (SD-20-35-7)	1	1		3-20
36-28	93108-15001	OIL SEAL (OSO-15.3-22-7)	1	1		4-18
36-29	257-15389-00	SEAL, push rod	1	1		5-7
36-30	93102-25017	OIL SEAL (SD-25-40-5)	1	1		5-27
36-31	93101-12004	OIL SEAL (S-12-22-5)	1	1		7-6
36-32	93109-15001	OIL SEAL (SDO-15-26-6)	1	1		8-9
36-33	93101-10001	OIL SEAL (S-10-21-5)	1	1		12-6

# NUMERICAL INDEX





# NUMERICAL INDEX

Ref No.	Parts No.	Ref No.	Parts No.	Ref No.	Parts No.
23- 2	1A0-20000-10	17- 1	1U1-21510-01-93	14-21	1Y1-21782-40
17- 8	1A0-21518-00	18- 1	1U1-23101-11	25- 8	1Y1-21796-00
24- 4	1A0-24161-00	18- 2	1U1-23126-11-35	15-16	1Y1-22210-20-93
23- 6	1A0-25824-01	18- 3	1U1-23136-11-35	19- 1	1Y1-23101-00
23- 1	1A0-25850-02	35-30	1U1-82590-20	19-14	1Y1-23122-00
23- 3	1A0-25854-01	21-14	1Y1-26243-00	19- 2	1Y1-23126-00
23- 4	1A0-25855-01	22-13	1Y1-26243-00	19- 6	1Y1-23134-00
23- 5	1A0-25893-01	33-10	1X4-84517-00	19- 3	1Y1-23136-00
22-18	1A0-83922-00	15- 1	1X9-22110-00-33	19- 7	1Y1-23152-00
12- 5	1E7-13176-00	36-11	1Y0-W0001-00	19- 8	1Y1-23157-00
23- 5	1J3-25852-01	36-25	1Y0-W0003-00	19- 9	1Y1-23170-00
23- 3	1J3-25854-01	21- 1	1Y0-26111-00	24- 2	1Y1-24244-00
23- 4	1J3-25855-01	21-32	1Y0-26290-00	24- 3	1Y1-24245-00
23- 7	1J3-25867-00	21-31	1Y0-26290-10	26- 1	1Y1-24730-90
11- 4	1J5-14713-00	21-15	1Y0-26311-00	26- 3	1Y1-24785-00-E1
11- 5	1J5-14714-00	21-23	1Y0-26335-00	26- 3	1Y1-24785-00-U2
36-21	1J5-14714-00	21-25	1Y0-26341-00	26- 3	1Y1-24785-00-Z0
14-22	1J5-21308-00	23- 2	1Y1-W0041-00	26- 3	1Y1-24785-10
20-18	1J5-23480-00	14-25	1Y1-21245-00	23- 1	1Y1-25850-00
24- 1	1J5-24110-01-X0	14-26	1Y1-21286-00	23-13	1Y1-25872-00
24- 1	1J5-24110-01-X1	17- 9	1Y1-21610-00-93	22-39	1Y1-26290-00
24- 1	1J5-24110-01-X2	14-14	1Y1-21711-00	22-40	1Y1-26290-10
24- 1	1J5-24110-01-07	14-15	1Y1-21714-00	22-24	1Y1-26311-00
24- 1	1J5-24110-01-08	14-17	1Y1-21721-10	22-24	1Y1-26311-20
35- 7	1J5-82508-20	14-18	1Y1-21724-00	22-31	1Y1-26335-00
23-13	1K0-25872-03	25- 1	1Y1-21750-00	22-31	1Y1-26335-20
23-14	1K0-25875-01	25- 4	1Y1-2176A-00	35-11	1Y1-81975-00
35-31	1K1-83350-11	25- 3	1Y1-21763-00	35- 6	1Y1-82131-00
27-21	1K8-25120-00-35	25- 2	1Y1-21764-00	34- 1	1Y1-83310-N0-93
13-10	1K8-81325-20	25- 5	1Y1-21770-00	34- 2	1Y1-83312-00
26- 4	1L9-24789-00	25- 6	1Y1-21772-00	34- 6	1Y1-83312-00
11-12	1M3-27134-00	25-13	1Y1-21776-00	34- 5	1Y1-83330-N0-93
32- 4	1M3-83513-10	14-20	1Y1-21781-00	33- 1	1Y1-84510-30
19-25	1N1-23158-00	14-23	1Y1-21781-09	33- 2	1Y1-84511-30
19-19	1T8-23111-00	14-20	1Y1-21781-20	33- 4	1Y1-84521-30
19-18	1T8-23112-00	14-20	1Y1-21781-30	33- 6	1Y1-84551-30-35
19-17	1T8-23114-00	14-20	1Y1-21781-40	11- 6	1Y1-14710-00
19- 4	1T8-23345-00	14-21	1Y1-21782-00	30-20	101-25412-00
19- 5	1T8-23156-00	14-21	1Y1-21782-09	3- 9	102-11633-02
30-29	1U0-25388-00	14-21	1Y1-21782-20	36- 4	102-11633-02
32- 5	1U0-83519-00-98	14-21	1Y1-21782-30	28-19	102-18416-00

## NUMERICAL INDEX

Ref No.	Parts No.	Ref No.	Parts No.	Ref No.	Parts No.
15- 2	102-22123-00	35- 3	116-82150-00	10-24	127-14161-00
24-12	102-24522-01	35- 4	116-82151-00	31- 4	127-84120-30
27-34	102-25137-00	8-15	117-15644-00	4- 5	131-16321-00
30- 8	102-25315-00	15-11	120-27431-00	11- 3	132-14613-00
30-34	102-25371-00	15-12	120-27433-00	36-20	132-14613-00
30-25	102-25389-00	9- 3	122-14412-00	5-20	132-15653-00-10
13-13	104-81328-20	11- 2	122-14612-02	5-20	132-15653-00-12
35- 1	104-82110-10	8- 2	122-15612-02	5-20	132-15653-00-14
35- 1	104-82110-21	4- 3	122-16164-00	8-13	132-15664-01
35- 5	104-82122-00	4-14	122-16164-00	8-11	132-15676-01
1-11	109-11351-00	17- 1	122-21517-00	2- 2	132-16346-00
36-12	109-11351-00	15- 5	122-22151-00	7-10	132-18113-01
3- 8	109-11631-02-96	19-23	122-23119-01	6-17	132-18140-01
36- 2	109-11631-02-96	19-24	122-23129-00	21-25	132-26341-10
3- 8	109-11631-02-98	18-21	122-23346-01	14-29	133-82131-00
36- 2	109-11631-02-98	19-21	122-23346-01	20- 6	136-23415-00
3- 8	109-11635-02	24- 5	122-24181-00	35-28	136-82540-00
36- 2	109-11635-02	24-13	122-24521-00	12-63	137-13137-00-03
3- 8	109-11636-02	24-15	122-24532-00	12-13	137-13137-00-05
36- 2	109-11636-02	24- 7	122-24610-01	12-13	137-13137-00-10
3- 8	109-11637-02	16- 2	122-27112-00	12-14	137-13138-01
36- 2	109-11637-02	16-15	122-27413-00	4-10	137-16356-00
3- 8	109-11638-02	35-27	122-82530-00	21-18	137-26261-01
36- 2	109-11638-02	32- 3	122-83516-10	22-27	137-26261-01
15- 3	109-22141-00	12- 1	126-18116-00	21- 3	137-83912-02-38
18- 6	109-23125-00	36-22	126-13116-00	21- 5	137-83913-01
18- 9	109-23143-00	25-11	126-24319-01	21-10	137-83913-01
18- 8	109-23145-01	10-13	127-14116-09	31- 2	150-84153-00
27- 2	109-25104-00	10-10	127-14123-00	10-28	152-14174-00
27-31	109-25136-00	10-25	127-14124-23	34- 4	152-83311-10
28- 8	109-25315-00	10-33	127-14125-01	34- 8	152-83311-10
21-25	109-26341-20	10-19	127-14131-00	10-27	156-14135-00
16- 5	109-27115-00	10-20	127-14133-00	8- 6	156-15618-01
21- 7	109-82820-12-94	10-11	127-14134-00	20- 1	156-23411-00
13-14	110-81345-21	10-17	127-14137-00	20- 3	156-23412-00
13- 9	110-81346-21	10- 2	127-14141-14	2- 5	164-15415-00
13-12	110-81347-21	10- 3	127-14143-28	6-13	164-18561-00
13- 6	110-81348-21	10- 3	127-14143-30	25- 7	164-21778-00
13-11	116-81331-20	10- 3	127-14143-32	21-24	164-26363-00
				22-32	164-26363-00

## NUMERICAL INDEX

Ref No.	Parts No.	Ref No.	Parts No.	Ref No.	Parts No.
22-37	168-83936-01	1-14	257-11111-01-94	4- 6	257-16324-00
1-21	180-13554-00	1-12	257-11311-00	4-20	257-16341-00
10-22	180-14158-01	3- 2	257-11412-01	4-17	257-16342-00
10-23	180-14168-00	3- 3	257-11422-01	4- 7	257-16351-00
15- 6	180-22117-00	3- 6	257-11681-00	4-16	257-16357-00
16- 7	180-27231-01	36- 8	257-11681-00	4- 4	257-16371-01
20- 5	183-23411-00	12-12	257-13101-04	5- 4	257-17121-00
20- 4	183-23412-00	21-28	257-13151-01	5- 2	257-17131-01
27-19	183-25149-00	22-35	257-13151-01	5- 5	257-17141-00
21- 1	183-26111-20	12- 3	257-13175-00	5-17	257-17211-00
20- 8	185-23435-00-98	12- 8	257-13178-00	5-18	257-17219-00
27- 8	195-25115-00	3-13	257-13312-00	5-14	257-17221-01
27- 7	195-25117-00	3-14	257-13315-00	5-16	257-17231-00
31- 5	195-84315-01	1-22	257-13551-00	5-12	257-17241-00
31- 8	195-84324-00	10-16	257-14112-15	5- 1	257-17411-01
18-12	196-23191-40	9- 1	257-14401-00-35	5-11	257-17421-01
18-18	207-23112-00	9- 8	257-14417-00	5-28	257-17461-31
18-16	207-23116-01	9- 2	257-14451-00	5-28	257-17461-41
19-16	207-23116-01	9- 7	257-14453-00	5-28	257-17461-51
18-10	207-23117-00	9- 6	257-14454-00	5- 9	257-17471-01
18-11	207-23141-10	1- 1	257-15111-01	7- 1	257-18101-01
18- 4	207-23147-00	1- 2	257-15121-01	7- 9	257-18111-00-91
18-15	207-23163-00	5- 7	257-15389-00	6- 3	257-18512-01
19-15	207-23163-00	36-29	257-15389-00	6-20	257-18531-00
21-16	207-26312-00	2- 1	257-15410-01	6- 1	257-18534-00
22-25	207-26312-00	2-18	257-15413-00	6- 7	257-18541-61
16- 1	207-27111-00	2-10	257-15417-01	16- 3	257-27211-00-91
13- 4	207-81312-21	2-11	257-15421-01	13- 1	257-81300-23
13- 5	207-81313-21	2-23	257-15433-00	13- 3	257-81309-21
18-14	209-23122-40	2-23	257-15433-00	13-16	257-81315-20
18-13	209-23142-10	2-12	257-15451-00	13- 2	257-81350-22
19-13	209-23142-10	36-17	257-15451-00	6- 2	259-18511-01
18- 7	209-23150-41	2-19	257-15463-00	3-11	260-11601-00
21-15	212-26311-00	36-18	257-15463-00	36- 3	260-11601-00
12-25	214-13162-01	8- 1	257-15610-02-91	3-14	260-11601-10
22- 6	214-83912-00	5-22	257-15651-01	36- 3	260-11601-10
21- 8	232-83922-31-38	8-18	257-15668-00	3-11	260-11601-20
22- 2	235-26241-10	3-16	257-16111-01	36- 3	260-11601-20
31- 7	241-84312-00	4- 2	257-16150-03	3-11	260-11601-30
31- 1	241-84330-00-33	4- 1	257-16301-03	36- 3	260-11601-30

# NUMERICAL INDEX

Ref No.	Parts No.	Ref No.	Parts No.	Ref No.	Parts No.
3-11	260-11601-40	27-24	296-25330-00	24-17	355-24524-01
36- 3	260-11601-40	30-14	296-25330-00	30-11	355-25320-00-35
36- 1	260-11630-00	31- 6	296-84114-30	35-12	355-81973-00
36- 1	260-11630-10	10-31	304-14261-00	35-20	355-82310-40
36- 1	260-11630-20	8-16	305-15641-00	32- 6	355-83522-00
36- 1	260-11630-30	8- 8	305-15660-02	32- 8	355-83524-00
36- 1	260-11630-40	28-20	306-25136-00	32- 7	355-83526-00
10-12	260-14142-25	23-12	306-25862-00	23-12	360-25862-00
10- 7	260-14181-10	22-12	306-26242-10	22- 4	360-82910-02
10- 5	260-14184-00	18-17	307-23114-00	10-30	363-14137-00
36-19	260-14184-00	22-14	307-26281-00	24-10	367-24500-04
10- 9	260-14190-12	22-15	307-26282-00	28-23	367-25381-00
15- 7	260-22311-00-35	2-17	315-15362-01	28- 1	390-25111-00
15- 7	260-22311-00-93	27-12	322-25118-00	28-17	390-25191-00
18-19	260-23111-40	28-12	341-25137-00	29- 2	390-25412-00
18-23	260-23121-40-33	28-10	341-25149-00	29- 1	390-25711-00
19-27	260-23121-40-33	28-11	341-25846-00	22- 3	393-83973-02
18-24	260-23131-40-33	23-20	341-25881-00	31-14	393-84313-00
19-28	260-23131-40-33	22- 5	341-82911-00	31- 3	394-84110-30
18-22	260-23318-40	11- 1	348-14611-00	10-21	395-14121-00
19-22	260-23318-40	11- 7	348-14753-00	10-26	395-14171-00
18-20	260-23340-30-33	12-21	353-13552-01	29- 6	400-70057-00
26- 2	260-24731-00	10-29	353-14138-00	29- 7	404-20000-30
21-15	260-26311-20	27-13	353-25181-03	29-11	404-20000-41
21-17	260-26321-00	30-23	353-25381-00	23-23	404-25871-01
22-26	260-26321-00	23-12	353-26241-00	23-17	404-25876-00
21-23	260-26335-10	23-13	353-26242-00	29- 8	404-25919-00
21-23	260-26335-20	13- 7	353-81332-20	10-15	405-14114-00
16-14	260-27411-00	35-10	353-81970-50	19-12	428-23191-00
14-24	260-28100-10	35-10	353-81970-63	13- 8	437-84321-20
35-23	260-83371-12	21- 2	353-82910-01	21- 2	448-82910-21
35-26	260-83373-00	3- 1	355-13400-01	20-12	462-23441-00-98
32-10	260-83550-00	10- 4	355-14185-00	20-11	462-23442-00-98
21- 1	283-26111-00	14- 1	355-21110-03-33	30- 1	462-25311-01-35
10-18	287-14136-00	18- 5	355-23424-90	22- 1	463-26111-00
2-21	288-14481-01	18- 5	355-23134-90	22- 1	463-26111-21
30-19	288-25439-10-33	24-11	355-24515-00	29- 5	464-20000-11
27-20	296-25135-00	24-39	355-24518-03	24- 6	467-24184-00
27-30	296-25138-00	35-35	355-24523-00	35-35	471-82531-00
30- 2	296-25304-00	24-18	355-24523-00	35-34	474-83352-00

# NUMERICAL INDEX

Ref No.	Parts No.	Ref No.	Parts No.	Ref No.	Parts No.
17- 5	481-21510-02-93	30-35	90109-08183	3-21	90201-12535
28- 2	481-25104-00	30-21	90109-08319	7- 7	90201-12975
28-27	481-25118-01	29- 3	90109-08367	5-23	90201-13202
28-14	481-25135-00	4-22	90113-66009	27-18	90201-20269
28-18	481-25138-00	1-10	90116-06026	15-15	90201-20279
32-10	481-83550-00	4- 8	90119-09001	28-13	90201-25286
1-19	498-15371-00	21-26	90123-06011	28-15	90201-25490
1-13	517-11181-00	22-33	90123-08013	5-21	90206-15021
36-13	517-11181-00	22-21	90146-66009	3-17	90208-12015
36- 6	517-11650-00	7- 4	90149-88094	4-12	90208-12015
3- 4	517-11651-00	23- 6	90151-05008	20-10	90209-10021
36- 7	517-11651-00	31- 9	90152-05005	8- 4	90209-10108
27- 1	517-25111-00-35	22-22	90170-06010	5-29	90215-13019
29- 4	526-25810-00	30-22	90170-08158	15-13	90240-06009
27-26	538-25155-00	21-22	90170-16038	6-11	90249-04039
27-23	538-25351-01	15- 4	90170-10159	16-12	90249-12008
30-13	538-25351-01	4-11	90170-12060	6- 4	90250-06013
30-16	538-25355-00	3-23	90170-12175	3-24	90280-63017
32- 2	552-83520-00	27-35	90171-10004	3-26	90282-05028
32- 1	582-83510-30	10-30	90171-10004	6- 6	90334-10006
10- 1	596-14101-00	28-28	90171-12095	21-30	90338-07013
14- 6	596-21158-00-33	1-19	90176-06002	22-38	90338-09046
14- 7	596-21191-00-33	15-20	90176-10013	23-22	90338-12081
19-10	596-23117-00	21-27	90179-06143	6-16	90338-26008
19-11	596-23141-00	16-13	90179-06176	3-17	90340-12005
19-20	596-23340-00-33	22-34	90179-08148	27-11	90387-10277
24-14	603-24531-01	3-18	90179-12044	30-28	90387-12096
35-22	808-82370-10	5-30	90179-12181	28-26	90387-12272
27-27	90101-06278	20- 7	90179-25051	30-26	90387-12412
30-17	90101-06278	26- 5	90183-04012	5-13	90387-16127
29-32	90101-08244	27-29	90201-07076	3-15	90387-17135
16-16	90101-08246	22-10	90201-08083	5-26	90387-17137
37- 6	90101-08281	12- 2	90201-08624	22-17	90387-22585
34- 2	90101-08285	23-11	90201-10118	12-27	90401-06094
15-17	90101-10255	27-36	90201-10123	23-10	90401-10034
20- 9	90105-10006	12- 9	90201-10135	12-18	90430-64004
6-18	90109-06001	12- 7	90201-10138	36-23	90430-04004
22- 7	90109-06410	15-18	90201-10140	12-26	90430-66013
22-19	90109-06465	30-43	90201-12174	36-24	90430-66013

NUMERICAL INDEX

Ref No.	Parts No.	Ref No.	Parts No.	Ref No.	Parts No.
35-29	90430-11034	28- 7	90960-12138	1- 8	92501-06065
1-18	90430-12038	30- 7	90560-12170	14-23	92701-06030
36-14	90430-12038	4-13	90560-17150	6-14	92901-06100
10-36	90445-05013	19-26	91311-08025	11- 8	92901-05100
10-35	90445-05015	10-14	91401-12010	12-15	92901-05100
12-23	90445-05018	10-32	91401-16015	29-10	92901-05100
35- 2	90445-08171	15-14	91401-16015	33- 8	92901-05100
24- 8	90445-09353	16- 9	91401-20012	35- 9	92901-05100
1-20	90446-07009	30-40	91401-20012	35-14	92901-05100
24- 9	90467-08003	27-14	91401-20020	35-15	92901-05200
25-12	90467-08003	30-24	91401-20020	15-10	92901-05600
12-22	90468-02033	28-24	91401-30025	33- 7	92901-05600
12-24	90468-02033	14-19	91401-50085	14- 9	92901-06100
14-28	90468-12007	28-22	91609-20014	21-20	92901-06100
30-38	90468-12007	14-27	91701-06065	22- 9	92901-06100
8-17	90468-26048	2- 4	91830-21014	22-29	92901-06100
14-16	90480-01141	2-13	91830-21014	23- 9	92901-06100
27-22	90480-10068	1- 3	91830-22016	23-16	92901-06100
30-12	90480-10068	5-10	92501-06012	23-19	92901-06100
2-16	90480-12012	21-21	92501-06012	30-32	92901-06100
17-14	90480-12013	22-30	92501-06012	33-13	92901-06100
14-31	90480-13016	23-15	92501-06012	35-19	92901-06100
14-30	90480-13203	25- 9	92501-06012	35-25	92901-06100
13-15	90480-16110	35-17	92501-06012	35-33	92901-06100
12-20	90501-02217	35-32	92501-06012	1-16	92901-06200
16-11	90501-10245	1-27	92501-06015	16-10	92901-06600
22-23	90501-10312	2-20	92501-06018	17-11	92901-06600
4- 9	90501-20122	10- 8	92501-06018	20-14	92901-06600
8- 3	90504-18005	1- 4	92501-06030	21-19	92901-06600
2-22	90506-06095	2-14	92501-06030	22-28	92901-06600
2- 3	90506-07066	2- 8	92501-06040	25-10	92901-06600
7- 2	90506-09009	2-15	92501-06040	30-33	92901-06600
6-19	90506-09112	1- 5	92501-06045	33-13	92901-06600
27-25	90506-16034	2- 7	92501-06045	9-15	92901-08100
30-15	90506-16034	1- 6	92501-06050	11-10	92901-08100
16- 8	90506-20041	2- 9	92501-06050	14- 5	92901-08100
16- 6	90506-29054	1- 9	92501-06055	14-12	92901-08100
8-12	90508-26136	1- 7	92501-06060	16-17	92901-08100
7- 3	90508-32207			17- 3	92901-08100
				17- 7	92901-08100

NUMERICAL INDEX

Ref No.	Parts No.	Ref No.	Parts No.	Ref No.	Parts No.
17-13	92901-08100	36-16	93210-23029	6- 8	93605-20043
29-13	92901-08100	10- 6	93220-08002	27- 4	94125-17259
30-37	92901-08100	5- 8	93306-20303	28- 6	94125-17259
31-12	92901-08100	3-19	93306-20418	30- 4	94125-17259
34-10	92901-08100	27- 9	93306-30003	27- 5	94225-17005
26- 7	92901-08200	27-15	93306-30003	28- 5	94225-17005
31-11	92901-08200	30- 9	93306-30101	30- 5	94225-17005
26- 9	92901-08600	28- 9	93306-30103	27- 6	94330-17023
30-39	92901-08600	3-12	93306-30302	28- 4	94330-17023
20-16	92901-10100	5-25	93306-30305	30- 6	94330-17023
15-19	92901-10200	3- 7	93310-11268	27- 3	94412-17002
20-17	92901-10600	36-10	93310-11268	30- 3	94414-17003
3-22	92901-12100	3- 5	93310-41810	28- 3	94414-17090
28-21	92901-12600	36- 9	93310-41810	30-41	94504-20096
12- 6	93101-10001	5- 6	93410-13004	30-42	94604-20001
36-33	93101-10001	5-19	93410-13004	1-28	94701-00040
7- 6	93101-12004	5-24	93410-13004	11- 9	95301-05600
36-31	93101-12004	8-10	93410-15005	12-16	95301-05600
3-20	93102-20009	27-17	93410-20009	24-20	95301-05600
36-27	93102-20009	8-14	93410-25017	35-16	95301-05600
5-27	93102-25017	6-12	93430-03014	27-28	95301-06600
36-30	93102-25017	6- 5	93430-08006	30-38	95301-06600
1-25	93103-28012	12-10	93430-08006	30-31	95301-06600
36-26	93103-28012	7- 8	93430-10016	32- 9	95301-06600
27-32	93104-07003	16- 4	93430-12008	33-14	95301-06600
30-10	93104-21016	8- 5	93440-10028	35-18	95301-06600
28-16	93105-45017	5- 3	93440-16030	35-21	95301-06600
27-16	93105-47007	5-15	93440-16030	4-21	95301-06700
27-10	93106-20001	6- 9	93440-32017	7- 5	95301-08600
28-25	93106-20002	3-10	93450-13022	11-11	95301-08600
30-27	93106-26002	36- 5	93450-13022	14-13	95301-08600
4-18	93108-15001	4-19	93501-04011	26- 8	95301-08600
36-28	93108-15001	20- 2	93501-04011	30-36	95301-08700
8- 9	93109-15001	4-15	93503-16010	31-13	95301-08700
36-32	93109-15001	12-19	93505-32002	34- 9	95301-08700
1-23	93210-12014	3-25	93603-08067	20-15	95301-10600
36-15	93210-12014	12- 4	93603-22028	10-34	95302-05600
27-33	93210-14104	1-26	93604-14012	9- 5	95303-06800
1-24	93210-23029	6-10	93604-22050	21- 6	95601-05100

# NUMERICAL INDEX

Ref No.	Parts No.	Ref No.	Parts No.	Ref No.	Parts No.
21-11	95601-05100	21- 9	98501-05025		
22-11	95601-06100	35-13	98501-05025		
22-20	95601-06100	24-16	98501-05030		
9-12	95701-08100	33- 5	98511-03045		
14- 4	95701-08100	20-19	98601-05012		
9-11	95821-08080	13-17	98701-05015		
9-10	95821-08100	12-17	98901-04008		
14- 3	95821-08120				
33- 9	97301-05010				
35-24	97301-06010				
33-11	97301-06012				
14- 8	97301-06014				
17-10	97301-06016				
22- 8	97301-06022				
23-18	97301-06025				
9- 4	97301-06185				
17- 2	97301-08012				
14-10	97301-08016				
17-12	97301-08016				
26- 6	97301-08018				
31-10	97301-08018				
14-11	97301-08030				
8- 7	97311-06025				
20-13	97311-06035				
7-11	97321-06020				
23- 8	97321-06025				
34- 3	98501-03006				
34- 7	98501-03006				
2- 6	98501-04006				
9- 9	98501-04008				
15- 8	98501-05008				
21-29	98501-05010				
22-36	98501-05010				
6-14	98501-05012				
29- 9	98501-05012				
35- 8	98501-05012				
12-11	98501-05016				
22-16	98501-05016				
15- 9	98501-05020				
21- 4	98501-05020				